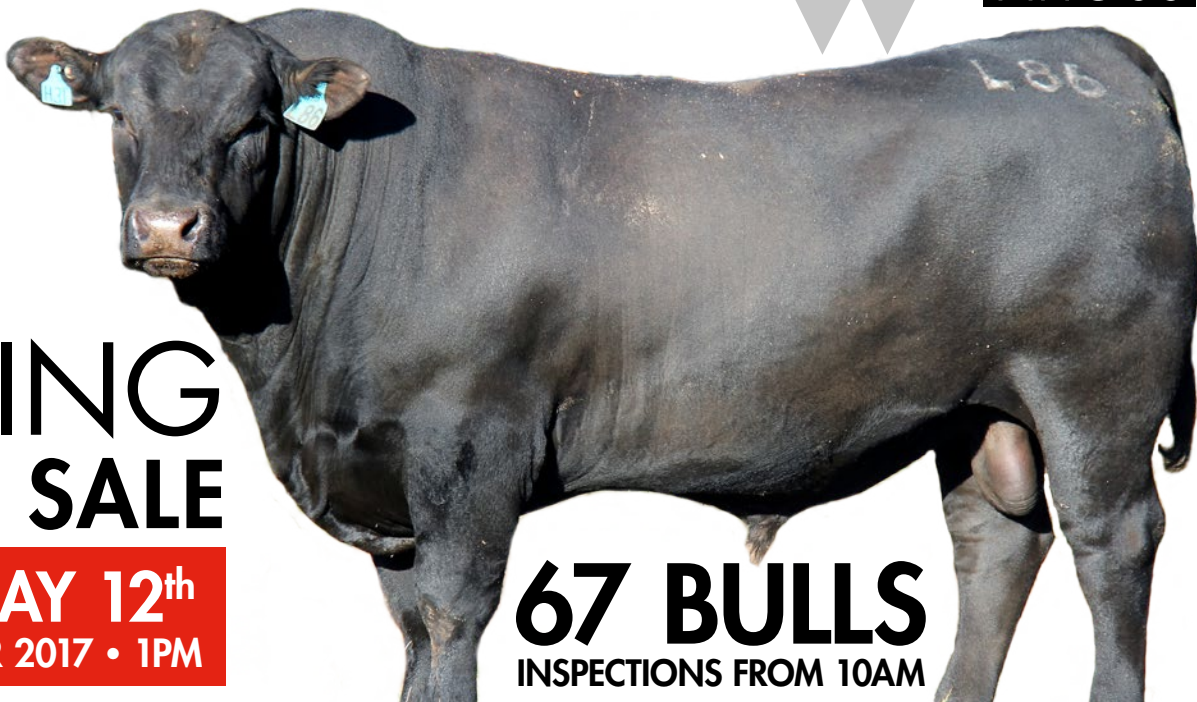


PERFORMANCE
DRIVEN



**SPRING
BULL SALE**

TUESDAY 12th
SEPTEMBER 2017 • 1PM

67 BULLS
INSPECTIONS FROM 10AM

www.weeranangus.com.au





Weerangourt Partnership 5395 Hamilton - Port Fairy Rd Byaduk Vic 3301

11th Annual
SPRING BULL SALE
Tuesday 12th September, 2017 @ 1pm
67 Performance Driven Angus Bulls

Bulls available for inspection any time by appointment, and from 10am on sale day.
Morning and Afternoon Tea and BBQ lunch provided.

FIELD DAY – WEDNESDAY 6TH SEPTEMBER AT 10AM – 5PM

EU & MSA
Accredited

WEERANGOURT PARTNERSHIP

ALEC & JO MOORE

T (03) 5578 7258 M 0438 787 258

Tim Wright 0400 028 606

E weeran@bigpond.com W www.weeranangus.com.au

Thanks to Ben Simpson for photographic & video images

Beef Only
Accreditation

Rebate of 2% to registered outside agents accompanying buyer to the sale and settling within 7 days of invoice.
No rebate will be paid on sales where a credit is in use.
The buyer must be nominated to the vendor by 8pm on Monday 11th September, 2017.
E weeran@bigpond.com

WELCOME TO WEERAN ANGUS



Dear Cattle Breeders,

Welcome to our Spring Catalogue and forthcoming bull sale. Tom and I travelled to NZ last month on a progeny inspection trip and attended a number of bull sales, being Kakahu, TeMania NZ and the Stern sales. The sales strengthened our resolve that Sydgen Black Pearl is performing very well here and in NZ. At Kakahu

Angus, 27 Black Pearl sons sold to a top of \$27,000 and in my opinion, was the standout sire line. In the Weeran sale we have 12 Black Pearl sons on offer, having already sold 11 sons in our autumn sale. A Weeran bred sire I am excited about is Weeran Hooper who has 5 sons in the sale. He is an outstanding individual and is the full package. Musgrave Big Sky, Weeran Joel and Weeran Jimmy also have good lines of sons catalogued. Calving ease is a highlight of the catalogue and good temperament well handled stock is something we are very proud of. We hope you can come and inspect the sale bulls at our field day on Wednesday 6th September at 10am. Please ring if you would like to inspect the bulls at some other time. We look forward to welcoming you to Weerangourt.

Kind regards
Alec & Jo Moore

DELIVERY

Weeran will organise delivery of your purchases free of charge up to 150kms. Over and above this by negotiation.

HEALTH STATUS FOR ALL SALE BULLS

1. Semen Quality Tested

2. Drenched and 7 in 1 Vaccination

3. Two Pestivirus Vaccinations and Two Vibrio Vaccinations to the 2 yr old bulls and one of each vaccination to the 18 mth old bulls.

SEMEN RIGHTS

Weeran retains semen rights on all sale bulls for use in the Weeran Herd. If required, Weeran will organise and collect semen at our expense and at your convenience.

GENETIC CONDITIONS

All sale bulls have been tested for known genetic conditions, and results are printed in the catalogue. For further information, please refer to Angus Australia website...
www.angusaustralia.com.au

COMPREHENSIVE GUARANTEE & SUPPLEMENTARY CATALOGUE INFORMATION

IF YOU EXPERIENCE ANY PROBLEMS, PLEASE MAKE SURE WE ARE THE FIRST CONTACT TO ENSURE WE CAN HELP YOU!

Visit www.weeranangus.com.au for full details

Selling Agent



Andrew Gunn 0409 329 316

Agent in participation



A RURALCO BUSINESS
Gary Webb 0429 615 059

IBMS GTS GRADING

IBMS GENETIC TYPE SUMMARY (GTS)

All Weeran bulls have been assessed on the GTS Type/Structure system. All the bulls in the catalogue are considered acceptable for soundness and muscling. The GTS system has been broken up into two distinctive trait groups.

DESCRIPTIVE TRAITS

Stature - Evaluation of bulls for frame size. A maturity pattern 25 is an average frame bull. This may be influenced by age of dam, particularly first calf heifers.

Capacity - Bull evaluation combines depth of fore rib along with spring of rib and width of chest floor, as well as depth of flank. Scores greater than 25 indicate larger capacity.

Body Length - Evaluation of body length from withers to pins. Scores greater than 25 indicate longer body length. **Muscle** - Scores higher than 25 indicate above average muscle.

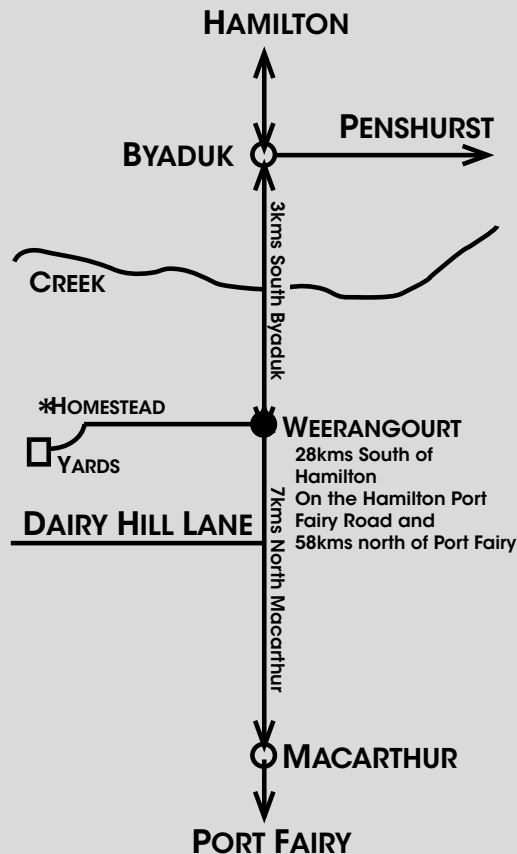
Doing Ability - Ability to lay fat relative to their peers under common management system.

STRUCTURAL SOUNDNESS TRAITS

The system is aimed at being as simple as possible. All structural traits (front and rear feet, rear leg angle and pastern scores) are presented in the same format. A score of 25 is the optimum. Scores of 23/24 and 26/27 represent a slight variation from ideal.

These animals would be acceptable in most breeding programs. Scores of 21/22 and 28/29 have a larger variation from ideal, but would be acceptable in most commercial herds, but seedstock producers should assess these animals carefully. Scores of 20 or 30 are low scoring and should be carefully evaluated prior to purchasing.

Bulls scoring outside these scores should be considered culls and not catalogued for sale. Structure scoring is only given to give potential purchasers a guide, it is not a guarantee of the lifetime structure soundness of an animal. Many thanks to Dick Whale for assessing all sale bulls. WEERAN GUARANTEES!





WEERAN LANGFORD L552

Genetic Status DDF,AMFU, NHFU, CAFU

Freeze Brand L552

Reg. Status A

Birth Date 17-09-15

TE MANIA AFRICA
WEERAN HOOPER H20
WEERAN VHW D412
TC FRANKLIN 619
WEERAN G409
WEERAN C660

EBV	Calving Ease DIR	Calving Ease DTRS	Gest. lgth (days)	Birth wt. (kg)	Milk (kg)	200 wt. (kg)	400 wt. (kg)	600 wt. (kg)	Mat. Cow wt.	Scrotal size	Carcase wt. (kg)	Rib Fat (mm)	Rump Fat (mm)	EMA (sq. cm)	Ret. Beef yield %	IMF %	ANGUS BREEDING INDEX	DOMESTIC INDEX	HEAVY GRAIN INDEX	HEAVY GRASS INDEX
		-0.3	0.8	-1.9	4.7	16	46	87	116	108	2.4	56	-0.9	0.4	5.9	-0.3	2.7	\$118	\$108	\$130

RAW DATA

GENETIC TYPE SUMMARY (GTS)

Act Birth Wght	Wght 12/07/17	Scrotal Size Cms 12/07/17	EMA Scan 29/11/16	IMF Scan 29/11/16	P8 Fat Mms 29/11/16	DESCRIPTIVE TRAITS					STRUCTURAL TRAITS				Sheath	GTS Grade
						Stature	Capacity	Body Length	Muscle	Doing Ability	Front Feet	Back Feet	Hind Leg Angle	Pastern Angle		
43	730	41	81	5.1	5	28	37	31	38	32	23	24	26	24	5	6

Buyer Price \$

One of the youngest bulls. He ticks all the boxes for growth and carcass. A top calf to start the sale.



WEERAN LARK L543

Genetic Status DDF,AMFU, NHFU, CAFU

Freeze Brand L543

Reg. Status A

Birth Date 22-09-15

BARWIDGEE VKD07328
BARWIDGEE JAY W
BARWIDGEE VKD06380
SITZ NEW DESIGN 458N
WEERAN G249
WEERAN A464

EBV	Calving Ease DIR	Calving Ease DTRS	Gest. lgth (days)	Birth wt. (kg)	Milk (kg)	200 wt. (kg)	400 wt. (kg)	600 wt. (kg)	Mat. Cow wt.	Scrotal size	Carcase wt. (kg)	Rib Fat (mm)	Rump Fat (mm)	EMA (sq. cm)	Ret. Beef yield %	IMF %	ANGUS BREEDING INDEX	DOMESTIC INDEX	HEAVY GRAIN INDEX	HEAVY GRASS INDEX
		3.6	3.7	-4.5	2.7	19	44	94	121	92	2.6	66	-0.6	-0.1	5	0.9	1.5	\$134	\$125	\$140

RAW DATA

GENETIC TYPE SUMMARY (GTS)

Act Birth Wght	Wght 12/07/17	Scrotal Size Cms 12/07/17	EMA Scan 29/11/16	IMF Scan 29/11/16	P8 Fat Mms 29/11/16	DESCRIPTIVE TRAITS					STRUCTURAL TRAITS				Sheath	GTS Grade
						Stature	Capacity	Body Length	Muscle	Doing Ability	Front Feet	Back Feet	Hind Leg Angle	Pastern Angle		
37	758	40	85	2.6	4	28	38	31	38	32	22	23	26	24	5	6

Buyer Price \$

Jay W does it again with an outstanding growth curve and type. He seems to be an ageless sire who just keeps coming up with industry leading cattle.

Angus Breed Average	Gest	Birth	Milk	200	400	600	MatC	SS	Carc	Rib	Rump	EMA	RBV	IMF	ABI	DI	Grain I	Grass I
	-3.6	4.3	15	42	77	101	87	1.7	57	0.0	-0.2	4.6	0.3	1.6	\$108	\$104	\$111	\$106



WEERAN LAS VEGAS L140

AI

Genetic Status AMFU, NHFU, CAFU, DDFU

Freeze Brand L140

Reg. Status A

Birth Date 07-08-15

GAR PREDESTINED
WERNER WESTWARD 357
BFF EVERELDA ENTENSE 401
BOOROOMOOKA FRANKEL F510
WEERAN J332 EBV
WEERAN D205

Calving Ease DIR	Calving Ease DTRS	Gest. Lgth (days)	Birth wt. (kg)	Milk (kg)	200 wt. (kg)	400 wt. (kg)	600 wt. (kg)	Mat. Cow wt.	Scrotal size	Carcase wt. (kg)	Rib Fat (mm)	Rump Fat (mm)	EMA (sq. cm)	Ret. Beef yield %	IMF %	ANGUS BREEDING INDEX	DOMESTIC INDEX	HEAVY GRAIN INDEX	HEAVY GRASS INDEX
-2.6	-0.1	-1.9	6.5	20	50	95	126	116	2	69	-0.8	-1	6	0.9	2.5	\$129	\$115	\$146	\$121

RAW DATA

GENETIC TYPE SUMMARY (GTS)

Act Birth Wght	Wght 12/07/17	Scrotal Size Cms 12/07/17	EMA Scan 29/11/16	IMF Scan 29/11/16	P8 Fat Mms 29/11/16	DESCRIPTIVE TRAITS					STRUCTURAL TRAITS				Sheath	GTS Grade
						Stature	Capacity	Body Length	Muscle	Doing Ability	Front Feet	Back Feet	Hind Leg Angle	Pastern Angle		
42	790	43	86	4.4	4	29	38	33	39	30	23	24	26	24	5	6

Buyer Price \$

Power packed paper work in this son of Westward. Top 10% heavy grain index and across the board performance.



WEERAN LAUNCH L361

AI

Genetic Status AMFU, NHFU, CAFU, DDFU

Freeze Brand L361

Reg. Status A

Birth Date 24-08-15

CONNEALY EARNAN 076E
MUSGRAVE BIG SKY
SAV PRIMROSE 8244
B/R FUTURE DIRECTION4268
WEERAN G206 EBV
WEERAN X509

Calving Ease DIR	Calving Ease DTRS	Gest. Lgth (days)	Birth wt. (kg)	Milk (kg)	200 wt. (kg)	400 wt. (kg)	600 wt. (kg)	Mat. Cow wt.	Scrotal size	Carcase wt. (kg)	Rib Fat (mm)	Rump Fat (mm)	EMA (sq. cm)	Ret. Beef yield %	IMF %	ANGUS BREEDING INDEX	DOMESTIC INDEX	HEAVY GRAIN INDEX	HEAVY GRASS INDEX
-4.2	-0.5	-3.3	6	16	51	92	123	108	2.7	70	-0.3	-0.6	5.8	0.8	1.6	\$108	\$103	\$111	\$108

RAW DATA

GENETIC TYPE SUMMARY (GTS)

Act Birth Wght	Wght 12/07/17	Scrotal Size Cms 12/07/17	EMA Scan 29/11/16	IMF Scan 29/11/16	P8 Fat Mms 29/11/16	DESCRIPTIVE TRAITS					STRUCTURAL TRAITS				Sheath	GTS Grade
						Stature	Capacity	Body Length	Muscle	Doing Ability	Front Feet	Back Feet	Hind Leg Angle	Pastern Angle		
49	844	45	87	3.8	4	32	38	35	38	30	22	23	26	24	5	5

Buyer Price \$

The first of the Musgrave Big Sky progeny at Weeran! The Musgrave program impressed Tim Wright recently while on tour in the States with Dick Whale. A big growthy bull who pulls birth weight.

Angus Breed Average	Gest	Birth	Milk	200	400	600	MatC	SS	Carc	Rib	Rump	EMA	RBY	IMF	ABI	DI	Grain I	Grass I
	-3.6	4.3	15	42	77	101	87	1.7	57	0.0	-0.2	4.6	0.3	1.6	\$108	\$104	\$111	\$106



WEERAN LAVA L421

AI

Genetic Status DDF,AMFU, NHFU, CAFU

Freeze Brand L421

Reg. Status A

Birth Date 28-08-15

CONNEALY EARNAN 076E
MUSGRAVE BIG SKY
SAV PRIMROSE 8244
LAWSON'S NADAL
WEERAN H512
WEERAN D616

Calving Ease DIR	Calving Ease DTRS	Gest. lgth (days)	Birth wt. (kg)	Milk (kg)	200 wt. (kg)	400 wt. (kg)	600 wt. (kg)	Mat. Cow wt.	Scrotal size	Carcase wt. (kg)	Rib Fat (mm)	Rump Fat (mm)	EMA (sq. cm)	Ret. Beef yield %	IMF %	ANGUS BREEDING INDEX	DOMESTIC INDEX	HEAVY GRAIN INDEX	HEAVY GRASS INDEX	
EBV	-5.8	-2.9	-1.2	6.2	11	55	96	124	107	1.2	70	-0.5	-0.9	4.7	0.1	2	\$103	\$100	\$107	\$103

RAW DATA

GENETIC TYPE SUMMARY (GTS)

Act Birth Wght	Wght 12/07/17	Scrotal Size Cms 12/07/17	EMA Scan 29/11/16	IMF Scan 29/11/16	P8 Fat Mms 29/11/16	DESCRIPTIVE TRAITS					STRUCTURAL TRAITS				Sheath	GTS Grade
						Stature	Capacity	Body Length	Muscle	Doing Ability	Front Feet	Back Feet	Hind Leg Angle	Pastern Angle		
48	798	41	84	5.7	5	29	37	32	39	34	22	23	26	23	5	5

Buyer Price \$

A very correct and powerful son of Musgrave Big sky.



WEERAN LEMONADE L295

AI

Genetic Status DDF,AMFU, NHFU, CAFU

Freeze Brand L295

Reg. Status A

Birth Date 22-08-15

CONNEALY EARNAN 076E
MUSGRAVE BIG SKY
SAV PRIMROSE 8244
ALPINE DINKY C106
WEERAN F40
WEERAN D76

Calving Ease DIR	Calving Ease DTRS	Gest. lgth (days)	Birth wt. (kg)	Milk (kg)	200 wt. (kg)	400 wt. (kg)	600 wt. (kg)	Mat. Cow wt.	Scrotal size	Carcase wt. (kg)	Rib Fat (mm)	Rump Fat (mm)	EMA (sq. cm)	Ret. Beef yield %	IMF %	ANGUS BREEDING INDEX	DOMESTIC INDEX	HEAVY GRAIN INDEX	HEAVY GRASS INDEX	
EBV	-1.8	0.5	-5.2	4.7	13	50	84	112	98	0.8	63	-0.7	-1.1	4.4	0.7	1.6	\$105	\$103	\$106	\$105

RAW DATA

GENETIC TYPE SUMMARY (GTS)

Act Birth Wght	Wght 12/07/17	Scrotal Size Cms 12/07/17	EMA Scan 29/11/16	IMF Scan 29/11/16	P8 Fat Mms 29/11/16	DESCRIPTIVE TRAITS					STRUCTURAL TRAITS				Sheath	GTS Grade
						Stature	Capacity	Body Length	Muscle	Doing Ability	Front Feet	Back Feet	Hind Leg Angle	Pastern Angle		
45	750	39	80	3.3	3	28	38	32	38	32	22	23	26	24	4	5

Buyer Price \$

A good bull in all areas who will keep adding value to the bottom line for many years.

Angus Breed Average	Gest	Birth	Milk	200	400	600	MatC	SS	Carc	Rib	Rump	EMA	RBV	IMF	ABI	DI	Grain I	Grass I
	-3.6	4.3	15	42	77	101	87	1.7	57	0.0	-0.2	4.6	0.3	1.6	\$108	\$104	\$111	\$106



WEERAN LEOPARD L371

AI**Genetic Status** AMFU, NHFU, CAFU, DDFU**Freeze Brand** L371**Reg. Status** A**Birth Date** 25-08-15

CONNELY EARNAN 076E
MUSGRAVE BIG SKY
 SAV PRIMROSE 8244
 B/R GENESIS
WEERAN D177
 WEERAN W20

Calving Ease DIR	Calving Ease DTRS	Gest. lgth (days)	Birth wt. (kg)	Milk (kg)	200 wt. (kg)	400 wt. (kg)	600 wt. (kg)	Mat. Cow wt.	Scrotal size	Carcase wt. (kg)	Rib Fat (mm)	Rump Fat (mm)	EMA (sq. cm)	Ret. Beef yield %	IMF %	ANGUS BREEDING INDEX	DOMESTIC INDEX	HEAVY GRAIN INDEX	HEAVY GRASS INDEX
-1.3	0.5	-2.7	5.2	13	51	82	109	91	0.6	65	-1.5	-2.6	7.1	1.5	1.2	\$101	\$103	\$99	\$104

RAW DATA**GENETIC TYPE SUMMARY (GTS)**

Act Birth Wght	Wght 12/07/17	Scrotal Size Cms 12/07/17	EMA Scan 29/11/16	IMF Scan 29/11/16	P8 Fat Mms 29/11/16	DESCRIPTIVE TRAITS					STRUCTURAL TRAITS				Sheath	GTS Grade
						Stature	Capacity	Body Length	Muscle	Doing Ability	Front Feet	Back Feet	Hind Leg Angle	Pastern Angle		
48	764	41	86	1.6	2	29	38	33	38	30	23	23	26	23	5	5

Buyer Price \$

An excellent high yielding son of Big Sky with top 10% EMA.

WEERAN LICORICE L329

AI**Genetic Status** DDF, AMFU, NHFU, CAFU**Freeze Brand** L329**Reg. Status** A**Birth Date** 23-08-15

RITO 9M25
WATTLETOP JASPER J3
 WATTLETOP ROBE G338
 LAWSON'S DINKY-DI Z191
WEERAN G351
 WEERAN C397

Calving Ease DIR	Calving Ease DTRS	Gest. lgth (days)	Birth wt. (kg)	Milk (kg)	200 wt. (kg)	400 wt. (kg)	600 wt. (kg)	Mat. Cow wt.	Scrotal size	Carcase wt. (kg)	Rib Fat (mm)	Rump Fat (mm)	EMA (sq. cm)	Ret. Beef yield %	IMF %	ANGUS BREEDING INDEX	DOMESTIC INDEX	HEAVY GRAIN INDEX	HEAVY GRASS INDEX
1.8	1.2	-4.3	4.1	17	45	72	101	69	3	56	-0.2	0	5.5	0.7	2.2	\$118	\$108	\$123	\$115

RAW DATA**GENETIC TYPE SUMMARY (GTS)**

Act Birth Wght	Wght 12/07/17	Scrotal Size Cms 12/07/17	EMA Scan 29/11/16	IMF Scan 29/11/16	P8 Fat Mms 29/11/16	DESCRIPTIVE TRAITS					STRUCTURAL TRAITS				Sheath	GTS Grade
						Stature	Capacity	Body Length	Muscle	Doing Ability	Front Feet	Back Feet	Hind Leg Angle	Pastern Angle		
44	750	46	75	3.8	3	31	37	34	37	31	23	23	23	26	5	4

Buyer Price \$

The first of the Wattle Top Jasper sons a good all round performer.

Angus Breed Average	Gest	Birth	Milk	200	400	600	MatC	SS	Carc	Rib	Rump	EMA	RBV	IMF	ABI	DI	Grain I	Grass I
	-3.6	4.3	15	42	77	101	87	1.7	57	0.0	-0.2	4.6	0.3	1.6	\$108	\$104	\$111	\$106



WEERAN LIGHT HOUSE L338

AI**Genetic Status** AMFU, NHFU, CAFU, DDFU**Freeze Brand** L338**Reg. Status** A**Birth Date** 23-08-15

TE MANIA BARTEL B219
TE MANIA EPISTLE E852
 TE MANIA MITTAGONG B562
 DUNOON W200
WEERAN D392
 WEERAN Z61

	Calving Ease DIR	Calving Ease DTRS	Gest. lgth (days)	Birth wt. (kg)	Milk (kg)	200 wt. (kg)	400 wt. (kg)	600 wt. (kg)	Mat. Cow wt.	Scrotal size	Carcase wt. (kg)	Rib Fat (mm)	Rump Fat (mm)	EMA (sq. cm)	Ret. Beef yield %	IMF %	ANGUS BREEDING INDEX	DOMESTIC INDEX	HEAVY GRAIN INDEX	HEAVY GRASS INDEX
EBV	-0.5	-1.5	-4.3	5.1	19	45	85	109	78	3.3	58	0.4	1	5.1	-0.1	2.5	\$123	\$112	\$133	\$117

RAW DATA

GENETIC TYPE SUMMARY (GTS)

Act Birth Wght	Wght 12/07/17	Scrotal Size Cms 12/07/17	EMA Scan 29/11/16	IMF Scan 29/11/16	P8 Fat Mms 29/11/16	DESCRIPTIVE TRAITS					STRUCTURAL TRAITS				Sheath	GTS Grade
						Stature	Capacity	Body Length	Muscle	Doing Ability	Front Feet	Back Feet	Hind Leg Angle	Pastern Angle		
45	786	45	86	4.6	5	30	35	33	35	32	21	23	25	23	5	4

Buyer Price \$

An Epistle son with good balanced growth and carcass, and an ideal mature cow weight being lower than his 400 day weight.



WEERAN LINDT L337

AI**Genetic Status** NHF, AMFU, CAFU, DDFU**Freeze Brand** L337**Reg. Status** A**Birth Date** 23-08-15

AYRVALE BARTEL E7
WEERAN JOEL J13
 WEERAN VHW E602
 BT TOUCHDOWN 14N
WEERAN D430
 WEERAN Z247

	Calving Ease DIR	Calving Ease DTRS	Gest. lgth (days)	Birth wt. (kg)	Milk (kg)	200 wt. (kg)	400 wt. (kg)	600 wt. (kg)	Mat. Cow wt.	Scrotal size	Carcase wt. (kg)	Rib Fat (mm)	Rump Fat (mm)	EMA (sq. cm)	Ret. Beef yield %	IMF %	ANGUS BREEDING INDEX	DOMESTIC INDEX	HEAVY GRAIN INDEX	HEAVY GRASS INDEX
EBV	0	0.3	-5	5.7	13	44	75	99	85	1.1	61	-0.4	0.3	3.9	0.1	2.1	\$109	\$103	\$115	\$105

RAW DATA

GENETIC TYPE SUMMARY (GTS)

Act Birth Wght	Wght 12/07/17	Scrotal Size Cms 12/07/17	EMA Scan 29/11/16	IMF Scan 29/11/16	P8 Fat Mms 29/11/16	DESCRIPTIVE TRAITS					STRUCTURAL TRAITS				Sheath	GTS Grade
						Stature	Capacity	Body Length	Muscle	Doing Ability	Front Feet	Back Feet	Hind Leg Angle	Pastern Angle		
48	806	42	83	4.5	5	28	38	33	37	32	22	23	24	26	4	4

Buyer Price \$

Sire, Weeran Joel, has been entered in the Benchmarking Trial and to date is 4th out of 41 for low birthweight and 4th for 200 day weight. A good balanced son by Joel.

Angus Breed Average	Gest	Birth	Milk	200	400	600	MatC	SS	Carc	Rib	Rump	EMA	RBV	IMF	ABI	DI	Grain I	Grass I
	-3.6	4.3	15	42	77	101	87	1.7	57	0.0	-0.2	4.6	0.3	1.6	\$108	\$104	\$111	\$106



WEERAN LIQUID GOLD L373

AI

Genetic Status AMFU, NHFU, CAFU, DDFU

Freeze Brand L373

Reg. Status A

Birth Date 25-08-15

SYDGEN TRUST 6228
SYDGEN BLACK PEARL 2006
SYDGEN ANITA 8611
WEERAN CHICKEN ON A CHAIN
WEERAN E467
WEERAN X278

Calving Ease DIR	Calving Ease DTRS	Gest. lgth (days)	Birth wt. (kg)	Milk (kg)	200 wt. (kg)	400 wt. (kg)	600 wt. (kg)	Mat. Cow wt.	Scrotal size	Carcase wt. (kg)	Rib Fat (mm)	Rump Fat (mm)	EMA (sq. cm)	Ret. Beef yield %	IMF %	ANGUS BREEDING INDEX	DOMESTIC INDEX	HEAVY GRAIN INDEX	HEAVY GRASS INDEX
-2.6	0.7	-3.7	6.9	11	48	83	116	119	1.3	67	0.4	0	3.3	0.2	1.2	\$103	\$95	\$105	\$103

RAW DATA

GENETIC TYPE SUMMARY (GTS)

Act Birth Wght	Wght 12/07/17	Scrotal Size Cms 12/07/17	EMA Scan 29/11/16	IMF Scan 29/11/16	P8 Fat Mms 29/11/16	DESCRIPTIVE TRAITS					STRUCTURAL TRAITS				Sheath	GTS Grade
						Stature	Capacity	Body Length	Muscle	Doing Ability	Front Feet	Back Feet	Hind Leg Angle	Pastern Angle		
51	760	41	66	1.5	3	30	37	33	38	29	22	23	22	25	4	4

Buyer Price \$

The Black Pearls have impressed, both here and in NZ. Phenotypically very good types of cattle.



WEERAN LOCH NESS L402

Genetic Status NHF, AMFU, CAFU, DDFU

Freeze Brand L402

Reg. Status A

Birth Date 27-08-15

LAWSON'S NADAL
WEERAN HOPMAN
WEERAN VHW E148
WEERAN VHW C250
WEERAN E523
WEERAN W276

EBV

Calving Ease DIR	Calving Ease DTRS	Gest. lgth (days)	Birth wt. (kg)	Milk (kg)	200 wt. (kg)	400 wt. (kg)	600 wt. (kg)	Mat. Cow wt.	Scrotal size	Carcase wt. (kg)	Rib Fat (mm)	Rump Fat (mm)	EMA (sq. cm)	Ret. Beef yield %	IMF %	ANGUS BREEDING INDEX	DOMESTIC INDEX	HEAVY GRAIN INDEX	HEAVY GRASS INDEX
-4.3	-1.4	-3.5	6.9	9	48	90	120	130	1.9	68	-0.7	-0.5	4.5	0.8	1	\$99	\$97	\$100	\$100

RAW DATA

GENETIC TYPE SUMMARY (GTS)

Act Birth Wght	Wght 12/07/17	Scrotal Size Cms 12/07/17	EMA Scan 29/11/16	IMF Scan 29/11/16	P8 Fat Mms 29/11/16	DESCRIPTIVE TRAITS					STRUCTURAL TRAITS				Sheath	GTS Grade
						Stature	Capacity	Body Length	Muscle	Doing Ability	Front Feet	Back Feet	Hind Leg Angle	Pastern Angle		
44	824	42	81	3.2	4	27	36	30	39	33	23	24	26	23	5	6

Buyer Price \$

Hopman is a powerful meat machine, who produces thick meaty cattle with plenty of body capacity. A Hopman son topped this years autumn sale at \$15,000.

Angus Breed Average	Gest	Birth	Milk	200	400	600	MatC	SS	Carc	Rib	Rump	EMA	RBY	IMF	ABI	DI	Grain I	Grass I
	-3.6	4.3	15	42	77	101	87	1.7	57	0.0	-0.2	4.6	0.3	1.6	\$108	\$104	\$111	\$106



WEERAN LUNCH L397

Genetic Status DDF,AMFU, NHFU, CAFU

Freeze Brand L397

Reg. Status A

Birth Date 26-08-15

LAWSONS NADAL
WEERAN HOPMAN
WEERAN VHW E148
WEERAN CHICKEN ON A CHAIN
WEERAN G370
WEERAN D173

Calving Ease DIR	Calving Ease DTRS	Gest. lgth (days)	Birth wt. (kg)	Milk (kg)	200 wt. (kg)	400 wt. (kg)	600 wt. (kg)	Mat. Cow wt.	Scrotal size	Carcase wt. (kg)	Rib Fat (mm)	Rump Fat (mm)	EMA (sq. cm)	Ret. Beef yield %	IMF %	ANGUS BREEDING INDEX	DOMESTIC INDEX	HEAVY GRAIN INDEX	HEAVY GRASS INDEX
-3.8	0	-3.3	6.6	6	48	85	111	108	2	65	-1.5	-2	6.2	1.8	0.8	\$101	\$102	\$100	\$102

RAW DATA

GENETIC TYPE SUMMARY (GTS)

Act Birth Wght	Wght 12/07/17	Scrotal Size Cms 12/07/17	EMA Scan 29/11/16	IMF Scan 29/11/16	P8 Fat Mms 29/11/16	DESCRIPTIVE TRAITS					STRUCTURAL TRAITS				Sheath	GTS Grade
						Stature	Capacity	Body Length	Muscle	Doing Ability	Front Feet	Back Feet	Hind Leg Angle	Pastern Angle		
43	772	41	87	1.4	2	26	38	30	40	32	23	24	26	24	5	6

Buyer Price \$

Another high grading powerful Hopman son



WEERAN LANDLORD L508

Genetic Status AMFU, NHFU, CAFU, DDFU

Freeze Brand L508

Reg. Status A

Birth Date 14-09-15

AYRVALE BARTEL E7
WEERAN JIMMY J1
WEERAN VHW C194
B/R FUTURE DIRECTION4268
WEERAN H130
WEERAN E160

Calving Ease DIR	Calving Ease DTRS	Gest. lgth (days)	Birth wt. (kg)	Milk (kg)	200 wt. (kg)	400 wt. (kg)	600 wt. (kg)	Mat. Cow wt.	Scrotal size	Carcase wt. (kg)	Rib Fat (mm)	Rump Fat (mm)	EMA (sq. cm)	Ret. Beef yield %	IMF %	ANGUS BREEDING INDEX	DOMESTIC INDEX	HEAVY GRAIN INDEX	HEAVY GRASS INDEX
-2.9	2	-7.3	6.1	16	53	91	122	112	1.4	77	-1.7	-1.7	6.2	1	2.5	\$124	\$112	\$138	\$117

RAW DATA

GENETIC TYPE SUMMARY (GTS)

Act Birth Wght	Wght 12/07/17	Scrotal Size Cms 12/07/17	EMA Scan 29/11/16	IMF Scan 29/11/16	P8 Fat Mms 29/11/16	DESCRIPTIVE TRAITS					STRUCTURAL TRAITS				Sheath	GTS Grade
						Stature	Capacity	Body Length	Muscle	Doing Ability	Front Feet	Back Feet	Hind Leg Angle	Pastern Angle		
50	854	40	85	3.9	3	27	38	30	38	32	24	25	25	24	5	5

Buyer Price \$

Sire, Weeran Jimmy, has been performing well in the Benchmarking Trial Cohort 5, and to date is 5th out of 48 for birthweight and 6th for Net Feed Efficiency. A very good son of Jimmy with excellent growth and carcass performance.

Angus Breed Average	Gest	Birth	Milk	200	400	600	MatC	SS	Carc	Rib	Rump	EMA	RBV	IMF	ABI	DI	Grain I	Grass I
	-3.6	4.3	15	42	77	101	87	1.7	57	0.0	-0.2	4.6	0.3	1.6	\$108	\$104	\$111	\$106



WEERAN LANOLINE L374

AI

Genetic Status DDF,AMFU, NHFU, CAFU

Freeze Brand L374

Reg. Status H

Birth Date 25-08-15

TUWHARETOA REGENT D145
TEMANIA STUD TE MANIA 11 465
TE MANIA 03 116
LAWSONS DINKY-DI Z191
WEERAN E41
WEERAN A94

EBV

Calving Ease DIR	Calving Ease DTRS	Gest. lgth (days)	Birth wt. (kg)	Milk (kg)	200 wt. (kg)	400 wt. (kg)	600 wt. (kg)	Mat. Cow wt.	Scrotal size	Carcase wt. (kg)	Rib Fat (mm)	Rump Fat (mm)	EMA (sq. cm)	Ret. Beef yield %	IMF %	ANGUS BREEDING INDEX	DOMESTIC INDEX	HEAVY GRAIN INDEX	HEAVY GRASS INDEX
-1.7	-4.1	-2.8	5.9	16	50	84	118	110	1.3	71	0.5	-0.3	5.9	-0.8	3.4	\$116	\$99	\$133	\$108

RAW DATA

GENETIC TYPE SUMMARY (GTS)

Act Birth Wght	Wght 12/07/17	Scrotal Size Cms 12/07/17	EMA Scan 29/11/16	IMF Scan 29/11/16	P8 Fat Mms 29/11/16	DESCRIPTIVE TRAITS					STRUCTURAL TRAITS				Sheath	GTS Grade
						Stature	Capacity	Body Length	Muscle	Doing Ability	Front Feet	Back Feet	Hind Leg Angle	Pastern Angle		
45	744	40	93	4.7	4	26	37	30	38	31	22	23	26	24	5	5

Buyer Price \$

A high marbling specialist with powerfull growth curve and excellent carcase potential. He had an excellent scan of 93sq cms and 4.7% marbling.



WEERAN LASSO L237

Genetic Status DDF,AMFU, NHFU, CAFU

Freeze Brand L237

Reg. Status A

Birth Date 19-08-15

AYRVALE BARTEL E7
WEERAN JOEL J13
WEERAN VHW E602
B/R GENESIS
WEERAN D208
WEERAN A202

EBV

Calving Ease DIR	Calving Ease DTRS	Gest. lgth (days)	Birth wt. (kg)	Milk (kg)	200 wt. (kg)	400 wt. (kg)	600 wt. (kg)	Mat. Cow wt.	Scrotal size	Carcase wt. (kg)	Rib Fat (mm)	Rump Fat (mm)	EMA (sq. cm)	Ret. Beef yield %	IMF %	ANGUS BREEDING INDEX	DOMESTIC INDEX	HEAVY GRAIN INDEX	HEAVY GRASS INDEX
3.4	2.5	-4.2	4	18	44	77	102	81	2.4	62	-0.4	-0.1	4.2	0.4	1.9	\$117	\$110	\$121	\$113

RAW DATA

GENETIC TYPE SUMMARY (GTS)

Act Birth Wght	Wght 12/07/17	Scrotal Size Cms 12/07/17	EMA Scan 29/11/16	IMF Scan 29/11/16	P8 Fat Mms 29/11/16	DESCRIPTIVE TRAITS					STRUCTURAL TRAITS				Sheath	GTS Grade
						Stature	Capacity	Body Length	Muscle	Doing Ability	Front Feet	Back Feet	Hind Leg Angle	Pastern Angle		
45	742	44	78	4	5	27	36	30	37	33	22	23	25	24	4	5

Buyer Price \$

A very good son of Joel who has balanced across the board performance data.

Angus Breed Average	Gest	Birth	Milk	200	400	600	MatC	SS	Carc	Rib	Rump	EMA	RBY	IMF	ABI	DI	Grain I	Grass I
	-3.6	4.3	15	42	77	101	87	1.7	57	0.0	-0.2	4.6	0.3	1.6	\$108	\$104	\$111	\$106



WEERAN LASER L429

AI

Genetic Status AMFU, NHFU, CAFU, DDFU

Freeze Brand L429

Reg. Status A

Birth Date 30-08-15

TE MANIA BARTEL B219
TE MANIA EPISTLE E852
TE MANIA MITTAGONG B562
B/R GENESIS
WEERAN D185
WEERAN U014

EBV

Calving Ease DIR	Calving Ease DTRS	Gest. lgth (days)	Birth wt. (kg)	Milk (kg)	200 wt. (kg)	400 wt. (kg)	600 wt. (kg)	Mat. Cow wt.	Scrotal size	Carcase wt. (kg)	Rib Fat (mm)	Rump Fat (mm)	EMA (sq. cm)	Ret. Beef yield %	IMF %	ANGUS BREEDING INDEX	DOMESTIC INDEX	HEAVY GRAIN INDEX	HEAVY GRASS INDEX
-3.8	-2.7	-0.5	6.9	17	49	86	116	91	2	65	-1.3	-1.8	7.2	0.9	2.1	\$113	\$103	\$122	\$108

RAW DATA

GENETIC TYPE SUMMARY (GTS)

Act Birth Wght	Wght 12/07/17	Scrotal Size Cms 12/07/17	EMA Scan 29/11/16	IMF Scan 29/11/16	P8 Fat Mms 29/11/16	DESCRIPTIVE TRAITS					STRUCTURAL TRAITS				Sheath	GTS Grade
						Stature	Capacity	Body Length	Muscle	Doing Ability	Front Feet	Back Feet	Hind Leg Angle	Pastern Angle		
52	762	43	89	2.5	2	26	37	30	39	32	23	24	26	23	4	5

Buyer Price \$

Good figures in all departments with sound structure and muscle.



WEERAN LAVISH L300

AI

Genetic Status AMFU, NHFU, CAFU, DDFU

Freeze Brand L300

Reg. Status A

Birth Date 22-08-15

SYDGEN TRUST 6228
SYDGEN BLACK PEARL 2006
SYDGEN ANITA 8611
NICHOLS NICHOLS EXTRA K205
WEERAN F121
WEERAN V444

EBV

Calving Ease DIR	Calving Ease DTRS	Gest. lgth (days)	Birth wt. (kg)	Milk (kg)	200 wt. (kg)	400 wt. (kg)	600 wt. (kg)	Mat. Cow wt.	Scrotal size	Carcase wt. (kg)	Rib Fat (mm)	Rump Fat (mm)	EMA (sq. cm)	Ret. Beef yield %	IMF %	ANGUS BREEDING INDEX	DOMESTIC INDEX	HEAVY GRAIN INDEX	HEAVY GRASS INDEX
1.5	3.4	-5.4	3.6	17	48	84	116	103	2.2	69	-0.2	-1.5	7.7	1.3	1.2	\$117	\$111	\$117	\$118

RAW DATA

GENETIC TYPE SUMMARY (GTS)

Act Birth Wght	Wght 12/07/17	Scrotal Size Cms 12/07/17	EMA Scan 29/11/16	IMF Scan 29/11/16	P8 Fat Mms 29/11/16	DESCRIPTIVE TRAITS					STRUCTURAL TRAITS				Sheath	GTS Grade
						Stature	Capacity	Body Length	Muscle	Doing Ability	Front Feet	Back Feet	Hind Leg Angle	Pastern Angle		
42	754	41	95	2.2	2	26	38	30	40	28	22	22	24	26	5	4

Buyer Price \$

Black Pearl the calving ease specialist has excelled with this calf being +3.4 for calving ease daughters EBV which has him in the top 5% for the breed.

Angus Breed Average	Gest	Birth	Milk	200	400	600	MatC	SS	Carc	Rib	Rump	EMA	RBV	IMF	ABI	DI	Grain I	Grass I
	-3.6	4.3	15	42	77	101	87	1.7	57	0.0	-0.2	4.6	0.3	1.6	\$108	\$104	\$111	\$106



WEERAN LAWYER L472

Genetic Status DDF,AMFU, NHFU, CAFU

Freeze Brand L472

Reg. Status A

Birth Date 08-09-15

BARWIDGEE VKD07328

BARWIDGEE JAY W

BARWIDGEE VKD06380

WEERAN CHICKEN ON A CHAIN

WEERAN G119

WEERAN Y87

Calving Ease DIR	Calving Ease DTRS	Gest. Lgth (days)	Birth wt. (kg)	Milk (kg)	200 wt. (kg)	400 wt. (kg)	600 wt. (kg)	Mat. Cow wt.	Scrotal size	Carcase wt. (kg)	Rib Fat (mm)	Rump Fat (mm)	EMA (sq. cm)	Ret. Beef yield %	IMF %	ANGUS BREEDING INDEX	DOMESTIC INDEX	HEAVY GRAIN INDEX	HEAVY GRASS INDEX
0.9	3.4	-3.9	4.7	12	41	86	106	98	0.7	60	-1.5	-0.8	-0.9	-0.1	1.6	\$109	\$108	\$116	\$105

RAW DATA

GENETIC TYPE SUMMARY (GTS)

Act Birth Wght	Wght 12/07/17	Scrotal Size Cms 12/07/17	EMA Scan 29/11/16	IMF Scan 29/11/16	P8 Fat Mms 29/11/16	DESCRIPTIVE TRAITS					STRUCTURAL TRAITS				Sheath	GTS Grade
						Stature	Capacity	Body Length	Muscle	Doing Ability	Front Feet	Back Feet	Hind Leg Angle	Pastern Angle		
43	740	36	68	2	3	27	37	30	36	31	22	23	26	24	5	4

Buyer Price \$

Only a few calves left by this excellent sire. He still keeps performing today. A good balanced growth curve from this longevity specialist.



WEERAN LEATHER L309

AI

Genetic Status AMFU, NHFU, CAFU, DDFU

Freeze Brand L309

Reg. Status A

Birth Date 22-08-15

RITO 9M25

WATTLETOP JASPER J3

WATTLETOP ROBE G338

WEERAN AWESOME A44

WEERAN C139

WEERAN A509

Calving Ease DIR	Calving Ease DTRS	Gest. Lgth (days)	Birth wt. (kg)	Milk (kg)	200 wt. (kg)	400 wt. (kg)	600 wt. (kg)	Mat. Cow wt.	Scrotal size	Carcase wt. (kg)	Rib Fat (mm)	Rump Fat (mm)	EMA (sq. cm)	Ret. Beef yield %	IMF %	ANGUS BREEDING INDEX	DOMESTIC INDEX	HEAVY GRAIN INDEX	HEAVY GRASS INDEX
0.8	-0.7	-4.9	4.8	14	40	71	99	86	1.8	56	-0.7	-1.1	4.4	1	1.3	\$99	\$97	\$99	\$100

RAW DATA

GENETIC TYPE SUMMARY (GTS)

Act Birth Wght	Wght 12/07/17	Scrotal Size Cms 12/07/17	EMA Scan 29/11/16	IMF Scan 29/11/16	P8 Fat Mms 29/11/16	DESCRIPTIVE TRAITS					STRUCTURAL TRAITS				Sheath	GTS Grade
						Stature	Capacity	Body Length	Muscle	Doing Ability	Front Feet	Back Feet	Hind Leg Angle	Pastern Angle		
48	740	42	84	1.5	2	26	36	30	38	28	23	23	25	24	5	4

Buyer Price \$

A Jasper son who is suitable for heifer joinings

Angus Breed Average	Gest	Birth	Milk	200	400	600	MatC	SS	Carc	Rib	Rump	EMA	RBY	IMF	ABI	DI	Grain I	Grass I
	-3.6	4.3	15	42	77	101	87	1.7	57	0.0	-0.2	4.6	0.3	1.6	\$108	\$104	\$111	\$106



WEERAN LEGION L443

Genetic Status AMFU, NHFU, CAFU, DDFU

Freeze Brand L443

Reg. Status A

Birth Date 03-09-15

AYRVALE BARTEL E7
WEERAN JOEL J13
WEERAN VHW E602
DUNOON MIDLAND A17
WEERAN D89
WEERAN Z361

	Calving Ease DIR	Calving Ease DTRS	Gest. lgth (days)	Birth wt. (kg)	Milk (kg)	200 wt. (kg)	400 wt. (kg)	600 wt. (kg)	Mat. Cow wt.	Scrotal size	Carcass wt. (kg)	Rib Fat (mm)	Rump Fat (mm)	EMA (sq. cm)	Ret. Beef yield %	IMF %	ANGUS BREEDING INDEX	DOMESTIC INDEX	HEAVY GRAIN INDEX	HEAVY GRASS INDEX
EBV	0.1	-0.8	-5.5	5.7	12	49	83	104	85	2.2	68	-1	-1.1	7.3	1.3	1.7	\$115	\$113	\$118	\$112

RAW DATA

GENETIC TYPE SUMMARY (GTS)

Act Birth Wght	Wght 12/07/17	Scrotal Size Cms 12/07/17	EMA Scan 29/11/16	IMF Scan 29/11/16	P8 Fat Mms 29/11/16	DESCRIPTIVE TRAITS					STRUCTURAL TRAITS				Sheath	GTS Grade
						Stature	Capacity	Body Length	Muscle	Doing Ability	Front Feet	Back Feet	Hind Leg Angle	Pastern Angle		
49	776	42	95	2.6	3	25	36	29	39	31	22	23	26	23	4	5

Buyer Price \$

Good strong indexing from this son of Joel, and in the top 10% of the breed for EMA. This bull's mature cow weight at +85 being below breed average is a good indicator of cow efficiency.



WEERAN LEADER L460

Genetic Status AMFU, NHFU, CAFU, DDFU

Freeze Brand L460

Reg. Status A

Birth Date 05-09-15

TE MANIA AFRICA
WEERAN HOOPER H20
WEERAN VHW D412
BARWIDGEE JAY W
WEERAN H193
WEERAN B359

	Calving Ease DIR	Calving Ease DTRS	Gest. lgth (days)	Birth wt. (kg)	Milk (kg)	200 wt. (kg)	400 wt. (kg)	600 wt. (kg)	Mat. Cow wt.	Scrotal size	Carcass wt. (kg)	Rib Fat (mm)	Rump Fat (mm)	EMA (sq. cm)	Ret. Beef yield %	IMF %	ANGUS BREEDING INDEX	DOMESTIC INDEX	HEAVY GRAIN INDEX	HEAVY GRASS INDEX
EBV	0.4	1.6	-2.3	4.9	20	45	93	126	104	4.4	62	-0.8	0.6	6.9	0.6	2.3	\$137	\$120	\$152	\$131

RAW DATA

GENETIC TYPE SUMMARY (GTS)

Act Birth Wght	Wght 12/07/17	Scrotal Size Cms 12/07/17	EMA Scan 29/11/16	IMF Scan 29/11/16	P8 Fat Mms 29/11/16	DESCRIPTIVE TRAITS					STRUCTURAL TRAITS				Sheath	GTS Grade
						Stature	Capacity	Body Length	Muscle	Doing Ability	Front Feet	Back Feet	Hind Leg Angle	Pastern Angle		
44	688	44	90	4.4	5	24	36	27	38	32	22	23	26	23	5	4

Buyer Price \$

An excellent Hooper son who has been used at Weeran to backup the heifer a.i. program. An outstanding data set which has him in the top 1% for scrotal, top 5% for 400 day, 600 day, and three indexes and top 1% for Heavy Grass Index.

Angus Breed Average	Gest	Birth	Milk	200	400	600	MatC	SS	Carc	Rib	Rump	EMA	RBV	IMF	ABI	DI	Grain I	Grass I
	-3.6	4.3	15	42	77	101	87	1.7	57	0.0	-0.2	4.6	0.3	1.6	\$108	\$104	\$111	\$106



23 WEERAN LEGUME L307

AI

Genetic Status DDF,AMFU, NHFU, CAFU

Freeze Brand L307

Reg. Status A

Birth Date 22-08-15

TE MANIA BARTEL B219
TE MANIA EPISTLE E852
TE MANIA MITTAGONG B562
TE MANIA AFRICA
WEERAN H491
WEERAN D538

EBV

Calving Ease DIR	Calving Ease DTRS	Gest. Lgth (days)	Birth wt. (kg)	Milk (kg)	200 wt. (kg)	400 wt. (kg)	600 wt. (kg)	Mat. Cow wt.	Scrotal size	Carcase wt. (kg)	Rib Fat (mm)	Rump Fat (mm)	EMA (sq. cm)	Ret. Beef yield %	IMF %	ANGUS BREEDING INDEX	DOMESTIC INDEX	HEAVY GRAIN INDEX	HEAVY GRASS INDEX
-2.6	-1.4	-3.9	5.3	17	44	81	102	71	3	47	1	1.9	6.8	-0.3	3.3	\$127	\$113	\$142	\$117

RAW DATA

GENETIC TYPE SUMMARY (GTS)

Act Birth Wght	Wght 12/07/17	Scrotal Size Cms 12/07/17	EMA Scan 29/11/16	IMF Scan 29/11/16	P8 Fat Mms 29/11/16	DESCRIPTIVE TRAITS					STRUCTURAL TRAITS				Sheath	GTS Grade
						Stature	Capacity	Body Length	Muscle	Doing Ability	Front Feet	Back Feet	Hind Leg Angle	Pastern Angle		
43	728	43	83	4.7	6	23	38	27	37	30	21	23	26	24	5	4

Buyer Price \$

This TeMania Epistle son exhibits positive fat, top 5% IMF teamed with high indexing figures.



24 WEERAN LEVERAGE L270

AI

Genetic Status AMFU, NHFU, CAFU, DDFU

Freeze Brand L270

Reg. Status A

Birth Date 21-08-15

TE MANIA BARTEL B219
TE MANIA EPISTLE E852
TE MANIA MITTAGONG B562
WEERAN ENGLAND E241
WEERAN G143
WEERAN E215

EBV

Calving Ease DIR	Calving Ease DTRS	Gest. Lgth (days)	Birth wt. (kg)	Milk (kg)	200 wt. (kg)	400 wt. (kg)	600 wt. (kg)	Mat. Cow wt.	Scrotal size	Carcase wt. (kg)	Rib Fat (mm)	Rump Fat (mm)	EMA (sq. cm)	Ret. Beef yield %	IMF %	ANGUS BREEDING INDEX	DOMESTIC INDEX	HEAVY GRAIN INDEX	HEAVY GRASS INDEX
-3.5	-0.7	-4.9	5.8	14	45	84	108	78	1.5	56	0.9	1.7	6.2	-0.1	2	\$117	\$107	\$121	\$113

RAW DATA

GENETIC TYPE SUMMARY (GTS)

Act Birth Wght	Wght 12/07/17	Scrotal Size Cms 12/07/17	EMA Scan 29/11/16	IMF Scan 29/11/16	P8 Fat Mms 29/11/16	DESCRIPTIVE TRAITS					STRUCTURAL TRAITS				Sheath	GTS Grade
						Stature	Capacity	Body Length	Muscle	Doing Ability	Front Feet	Back Feet	Hind Leg Angle	Pastern Angle		
45	708	41	83	3.3	6	23	37	26	37	32	22	23	26	24	5	4

Buyer Price \$

A good all round grandson of TeMania Bartel.

Angus Breed Average	Gest	Birth	Milk	200	400	600	MatC	SS	Carc	Rib	Rump	EMA	RBY	IMF	ABI	DI	Grain I	Grass I
	-3.6	4.3	15	42	77	101	87	1.7	57	0.0	-0.2	4.6	0.3	1.6	\$108	\$104	\$111	\$106



25 WEERAN LIGHTNING RIDGE L394 AI

Genetic Status AMFU, NHFU, CAFU, DDFU

Freeze Brand L394

Reg. Status A

Birth Date 26-08-15

TUWHARETOA REGENT D145
TEMANIA STUD TE MANIA 11 465
TE MANIA 03 116
DUNOON MIDLAND A17
WEERAN D113
WEERAN Z384

Calving Ease DIR	Calving Ease DTRS	Gest. Lgth (days)	Birth wt. (kg)	Milk (kg)	200 wt. (kg)	400 wt. (kg)	600 wt. (kg)	Mat. Cow wt.	Scrotal size	Carcase wt. (kg)	Rib Fat (mm)	Rump Fat (mm)	EMA (sq. cm)	Ret. Beef yield %	IMF %	ANGUS BREEDING INDEX	DOMESTIC INDEX	HEAVY GRAIN INDEX	HEAVY GRASS INDEX
-2.3	-5.1	-4.5	5.9	10	46	74	100	99	1.1	64	0.9	0	5.9	-0.7	2.7	\$94	\$88	\$100	\$91

RAW DATA

GENETIC TYPE SUMMARY (GTS)

Act Birth Wght	Wght 12/07/17	Scrotal Size Cms 12/07/17	EMA Scan 29/11/16	IMF Scan 29/11/16	P8 Fat Mms 29/11/16	DESCRIPTIVE TRAITS					STRUCTURAL TRAITS				Sheath	GTS Grade
						Stature	Capacity	Body Length	Muscle	Doing Ability	Front Feet	Back Feet	Hind Leg Angle	Pastern Angle		
48	784	40	83	2.9	3	24	36	28	40	33	22	23	26	23	4	4

Buyer Price \$

A NZ influenced Tuwharetoa Regent grandson, who has good balanced growth and carcass numbers.



26 WEERAN LYNDON B JOHNSON L398 AI

Genetic Status AMFU, NHFU, CAFU, DDFU

Freeze Brand L398

Reg. Status A

Birth Date 26-08-15

TUWHARETOA REGENT D145
TEMANIA STUD TE MANIA 11 465
TE MANIA 03 116
WEERAN VHW A315
WEERAN C645
WEERAN A434

Calving Ease DIR	Calving Ease DTRS	Gest. Lgth (days)	Birth wt. (kg)	Milk (kg)	200 wt. (kg)	400 wt. (kg)	600 wt. (kg)	Mat. Cow wt.	Scrotal size	Carcase wt. (kg)	Rib Fat (mm)	Rump Fat (mm)	EMA (sq. cm)	Ret. Beef yield %	IMF %	ANGUS BREEDING INDEX	DOMESTIC INDEX	HEAVY GRAIN INDEX	HEAVY GRASS INDEX
-2.5	-2.9	-2.1	5.2	15	46	84	111	103	1.3	68	0.7	0.1	4.6	-0.8	2.9	\$109	\$99	\$122	\$103

RAW DATA

GENETIC TYPE SUMMARY (GTS)

Act Birth Wght	Wght 12/07/17	Scrotal Size Cms 12/07/17	EMA Scan 29/11/16	IMF Scan 29/11/16	P8 Fat Mms 29/11/16	DESCRIPTIVE TRAITS					STRUCTURAL TRAITS				Sheath	GTS Grade
						Stature	Capacity	Body Length	Muscle	Doing Ability	Front Feet	Back Feet	Hind Leg Angle	Pastern Angle		
45	760	39	85	4	3	22	38	26	38	32	22	23	25	23	4	4

Buyer Price \$

Once again a good set of numbers from this Tuwharetoa Regent grandson.

Angus Breed Average	Gest	Birth	Milk	200	400	600	MatC	SS	Carc	Rib	Rump	EMA	RBV	IMF	ABI	DI	Grain I	Grass I
	-3.6	4.3	15	42	77	101	87	1.7	57	0.0	-0.2	4.6	0.3	1.6	\$108	\$104	\$111	\$106



27 WEERAN MORTIFY M121

Genetic Status AMFU, NHFU, CAFU, DDFU

Freeze Brand M121

Reg. Status H

Birth Date 10-04-16

AYRVALE BARTEL E7
WEERAN JIMMY J1
WEERAN VHW C194
NICHOLS NICHOLS EXTRA K205
WEERAN ELIZABETH E407 EBV
WEERAN Y180

Calving Ease DIR	Calving Ease DTRS	Gest. Lgth (days)	Birth wt. (kg)	Milk (kg)	200 wt. (kg)	400 wt. (kg)	600 wt. (kg)	Mat. Cow wt.	Scrotal size	Carcase wt. (kg)	Rib Fat (mm)	Rump Fat (mm)	EMA (sq. cm)	Ret. Beef yield %	IMF %	ANGUS BREEDING INDEX	DOMESTIC INDEX	HEAVY GRAIN INDEX	HEAVY GRASS INDEX
-1.6	2.4	-3.3	3.7	17	43	76	92	78	1	62	-1.2	-1.1	5	0.7	1.7	\$99	\$103	\$100	\$98

RAW DATA

GENETIC TYPE SUMMARY (GTS)

Act Birth Wght	Wght 12/07/17	Scrotal Size Cms 12/07/17	EMA Scan 29/11/16	IMF Scan 29/11/16	P8 Fat Mms 29/11/16	DESCRIPTIVE TRAITS					STRUCTURAL TRAITS				Sheath	GTS Grade
						Stature	Capacity	Body Length	Muscle	Doing Ability	Front Feet	Back Feet	Hind Leg Angle	Pastern Angle		
41	574	33	NA	NA	NA	30	37	34	37	30	22	24	26	24	5	5

Buyer Price \$

A low birthweight HBR son of Jimmy. Ideal for heifers.



28 WEERAN MACADAMIA M14 AI ET

Genetic Status AMFU, NHFU, CAFU, DDFU

Freeze Brand M014

Reg. Status H

Birth Date 23-02-16

SYDGEN TRUST 6228
SYDGEN BLACK PEARL 2006
SYDGEN ANITA 8611
NICHOLS NICHOLS EXTRA K205
WEERAN ELIZABETH E407 EBV
WEERAN Y180

Calving Ease DIR	Calving Ease DTRS	Gest. Lgth (days)	Birth wt. (kg)	Milk (kg)	200 wt. (kg)	400 wt. (kg)	600 wt. (kg)	Mat. Cow wt.	Scrotal size	Carcase wt. (kg)	Rib Fat (mm)	Rump Fat (mm)	EMA (sq. cm)	Ret. Beef yield %	IMF %	ANGUS BREEDING INDEX	DOMESTIC INDEX	HEAVY GRAIN INDEX	HEAVY GRASS INDEX
2.2	3	-3.6	2.8	18	42	72	94	71	1.3	58	0	-0.8	6.4	0.8	1.4	\$104	\$105	\$100	\$106

RAW DATA

GENETIC TYPE SUMMARY (GTS)

Act Birth Wght	Wght 12/07/17	Scrotal Size Cms 12/07/17	EMA Scan 29/11/16	IMF Scan 29/11/16	P8 Fat Mms 29/11/16	DESCRIPTIVE TRAITS					STRUCTURAL TRAITS				Sheath	GTS Grade
						Stature	Capacity	Body Length	Muscle	Doing Ability	Front Feet	Back Feet	Hind Leg Angle	Pastern Angle		
36	662	40	NA	NA	NA	28	38	31	38	32	22	23	26	23	5	5

Buyer Price \$

Our first HBR embryo on offer for this sale out of E407. Very low birthweight and excellent calving ease from Sydgen Black Pearl.

Angus Breed Average	Gest	Birth	Milk	200	400	600	MatC	SS	Carc	Rib	Rump	EMA	RBY	IMF	ABI	DI	Grain I	Grass I
	-3.6	4.3	15	42	77	101	87	1.7	57	0.0	-0.2	4.6	0.3	1.6	\$108	\$104	\$111	\$106



WEERAN MAGPIE M12

AI ET

Genetic Status AMFU, NHFU, CAFU, DDFU

Freeze Brand M012

Reg. Status H

Birth Date 23-02-16

SYDGEN TRUST 6228
SYDGEN BLACK PEARL 2006
SYDGEN ANITA 8611
NICHOLS NICHOLS EXTRA K205
WEERAN ELIZABETH E407 EBV
WEERAN Y180

Calving Ease DIR	Calving Ease DTRS	Gest. Lgth (days)	Birth wt. (kg)	Milk (kg)	200 wt. (kg)	400 wt. (kg)	600 wt. (kg)	Mat. Cow wt.	Scrotal size	Carcase wt. (kg)	Rib Fat (mm)	Rump Fat (mm)	EMA (sq. cm)	Ret. Beef yield %	IMF %	ANGUS BREEDING INDEX	DOMESTIC INDEX	HEAVY GRAIN INDEX	HEAVY GRASS INDEX
-1.5	1.7	-2.9	4.8	16	47	79	105	85	1.4	63	-0.3	-1.1	6.4	1	1.4	\$106	\$103	\$105	\$106

RAW DATA

GENETIC TYPE SUMMARY (GTS)

Act Birth Wght	Wght 12/07/17	Scrotal Size Cms 12/07/17	EMA Scan 29/11/16	IMF Scan 29/11/16	P8 Fat Mms 29/11/16	DESCRIPTIVE TRAITS					STRUCTURAL TRAITS				Sheath	GTS Grade
						Stature	Capacity	Body Length	Muscle	Doing Ability	Front Feet	Back Feet	Hind Leg Angle	Pastern Angle		
46	652	41	NA	NA	NA	28	37	31	38	32	22	23	27	23	5	5

Buyer Price \$

A full HBR brother to Lot 28, 30, 33 and 34 out of our Embryo program. This son exhibits a good growth curve.



WEERAN MARBLE M16

AI ET

Genetic Status AMFU, NHFU, CAFU, DDFU

Freeze Brand M016

Reg. Status H

Birth Date 25-02-16

SYDGEN TRUST 6228
SYDGEN BLACK PEARL 2006
SYDGEN ANITA 8611
NICHOLS NICHOLS EXTRA K205
WEERAN ELIZABETH E407 EBV
WEERAN Y180

Calving Ease DIR	Calving Ease DTRS	Gest. Lgth (days)	Birth wt. (kg)	Milk (kg)	200 wt. (kg)	400 wt. (kg)	600 wt. (kg)	Mat. Cow wt.	Scrotal size	Carcase wt. (kg)	Rib Fat (mm)	Rump Fat (mm)	EMA (sq. cm)	Ret. Beef yield %	IMF %	ANGUS BREEDING INDEX	DOMESTIC INDEX	HEAVY GRAIN INDEX	HEAVY GRASS INDEX
-0.6	2	-3.1	4	17	43	75	98	78	1.3	59	-0.1	-0.9	6.4	0.9	1.4	\$102	\$102	\$100	\$103

RAW DATA

GENETIC TYPE SUMMARY (GTS)

Act Birth Wght	Wght 12/07/17	Scrotal Size Cms 12/07/17	EMA Scan 29/11/16	IMF Scan 29/11/16	P8 Fat Mms 29/11/16	DESCRIPTIVE TRAITS					STRUCTURAL TRAITS				Sheath	GTS Grade
						Stature	Capacity	Body Length	Muscle	Doing Ability	Front Feet	Back Feet	Hind Leg Angle	Pastern Angle		
45	570	41	NA	NA	NA	28	36	33	36	30	21	23	26	23	4	4

Buyer Price \$

Another HBR brother from our very successful embryo program with good EMA

Angus Breed Average	Gest	Birth	Milk	200	400	600	MatC	SS	Carc	Rib	Rump	EMA	RBV	IMF	ABI	DI	Grain I	Grass I
	-3.6	4.3	15	42	77	101	87	1.7	57	0.0	-0.2	4.6	0.3	1.6	\$108	\$104	\$111	\$106



WEERAN MARVEL M109

Genetic Status AMFU, NHFU, CAFU, DDFU Freeze Brand M109 Reg. Status A Birth Date 02-04-16

AYRVALE BARTEL E7
WEERAN JOEL J13
WEERAN VHW E602
DUNOON GABBA
WEERAN K28
WEERAN G35

	Calving Ease DIR	Calving Ease DTRS	Gest. lgth (days)	Birth wt. (kg)	Milk (kg)	200 wt. (kg)	400 wt. (kg)	600 wt. (kg)	Mat. Cow wt.	Scrotal size	Carcase wt. (kg)	Rib Fat (mm)	Rump Fat (mm)	EMA (sq. cm)	Ret. Beef yield %	IMF %	ANGUS BREEDING INDEX	DOMESTIC INDEX	HEAVY GRAIN INDEX	HEAVY GRASS INDEX
EBV	2.4	2.9	-5.4	3.8	17	43	79	105	93	2	67	-0.1	0.1	3.7	-0.3	2.4	\$119	\$109	\$129	\$113

RAW DATA

GENETIC TYPE SUMMARY (GTS)

Act Birth Wght	Wght 12/07/17	Scrotal Size Cms 12/07/17	EMA Scan 29/11/16	IMF Scan 29/11/16	P8 Fat Mms 29/11/16	DESCRIPTIVE TRAITS					STRUCTURAL TRAITS				Sheath	GTS Grade
						Stature	Capacity	Body Length	Muscle	Doing Ability	Front Feet	Back Feet	Hind Leg Angle	Pastern Angle		
32	556	39	NA	NA	NA	26	37	29	38	32	22	23	26	23	5	5

Buyer Price \$

A low birthweight Joel son with excellent across the board figures, and in particular IMF. Strong indexing. Ideal for heifer matings.



WEERAN MAI TAI M129

Genetic Status AMFU, NHFU, CAFU, DDFU Freeze Brand M129 Reg. Status A Birth Date 01-05-16

TE MANIA AFRICA
WEERAN HOOPER H20
WEERAN VHW D412
B/YR FUTURE DIRECTION4268
WEERAN H427
WEERAN B261

	Calving Ease DIR	Calving Ease DTRS	Gest. lgth (days)	Birth wt. (kg)	Milk (kg)	200 wt. (kg)	400 wt. (kg)	600 wt. (kg)	Mat. Cow wt.	Scrotal size	Carcase wt. (kg)	Rib Fat (mm)	Rump Fat (mm)	EMA (sq. cm)	Ret. Beef yield %	IMF %	ANGUS BREEDING INDEX	DOMESTIC INDEX	HEAVY GRAIN INDEX	HEAVY GRASS INDEX
EBV	0.1	1.3	-3	4.6	17	41	77	101	83	2.3	51	-0.8	0	6.7	0.7	2.5	\$117	\$110	\$128	\$112

RAW DATA

GENETIC TYPE SUMMARY (GTS)

Act Birth Wght	Wght 12/07/17	Scrotal Size Cms 12/07/17	EMA Scan 29/11/16	IMF Scan 29/11/16	P8 Fat Mms 29/11/16	DESCRIPTIVE TRAITS					STRUCTURAL TRAITS				Sheath	GTS Grade
						Stature	Capacity	Body Length	Muscle	Doing Ability	Front Feet	Back Feet	Hind Leg Angle	Pastern Angle		
43	470	43	NA	NA	NA	26	37	29	38	32	23	24	26	23	5	6

Buyer Price \$

A young Hooper son with strong growth and carcass numbers. Ideal for heifer matings.

Angus Breed Average	Gest	Birth	Milk	200	400	600	MatC	SS	Carc	Rib	Rump	EMA	RBY	IMF	ABI	DI	Grain I	Grass I
	-3.6	4.3	15	42	77	101	87	1.7	57	0.0	-0.2	4.6	0.3	1.6	\$108	\$104	\$111	\$106



WEERAN MALIBU M15

AI ET

Genetic Status AMFU, NHFU, CAFU, DDFU

Freeze Brand M015

Reg. Status H

Birth Date 24-02-16

SYDGEN TRUST 6228
SYDGEN BLACK PEARL 2006
SYDGEN ANITA 8611
NICHOLS NICHOLS EXTRA K205
WEERAN ELIZABETH E407 EBV
WEERAN Y180

Calving Ease DIR	Calving Ease DTRS	Gest. lgth (days)	Birth wt. (kg)	Milk (kg)	200 wt. (kg)	400 wt. (kg)	600 wt. (kg)	Mat. Cow wt.	Scrotal size	Carcase wt. (kg)	Rib Fat (mm)	Rump Fat (mm)	EMA (sq. cm)	Ret. Beef yield %	IMF %	ANGUS BREEDING INDEX	DOMESTIC INDEX	HEAVY GRAIN INDEX	HEAVY GRASS INDEX
0.4	2.4	-3.2	3.6	17	42	73	95	74	1.3	58	-0.1	-0.8	6.4	0.9	1.4	\$102	\$103	\$100	\$104

RAW DATA

GENETIC TYPE SUMMARY (GTS)

Act Birth Wght	Wght 12/07/17	Scrotal Size Cms 12/07/17	EMA Scan 29/11/16	IMF Scan 29/11/16	P8 Fat Mms 29/11/16	DESCRIPTIVE TRAITS					STRUCTURAL TRAITS				Sheath	GTS Grade
						Stature	Capacity	Body Length	Muscle	Doing Ability	Front Feet	Back Feet	Hind Leg Angle	Pastern Angle		
41	634	37	NA	NA	NA	26	37	29	37	32	22	23	26	24	4	5

Buyer Price \$

A very low birthweight HBR embryo by Black Pearl who is a calving ease specialist. Ideal for heifer matings.



WEERAN MARMALADE M11

Genetic Status AMFU, NHFU, CAFU, DDFU

Freeze Brand M011

Reg. Status H

Birth Date 22-02-16

SYDGEN TRUST 6228
SYDGEN BLACK PEARL 2006
SYDGEN ANITA 8611
NICHOLS NICHOLS EXTRA K205
WEERAN ELIZABETH E407 EBV
WEERAN Y180

Calving Ease DIR	Calving Ease DTRS	Gest. lgth (days)	Birth wt. (kg)	Milk (kg)	200 wt. (kg)	400 wt. (kg)	600 wt. (kg)	Mat. Cow wt.	Scrotal size	Carcase wt. (kg)	Rib Fat (mm)	Rump Fat (mm)	EMA (sq. cm)	Ret. Beef yield %	IMF %	ANGUS BREEDING INDEX	DOMESTIC INDEX	HEAVY GRAIN INDEX	HEAVY GRASS INDEX
-1	1.8	-2.6	4.5	17	41	71	94	76	1.2	56	-0.1	-0.8	6.3	0.9	1.4	\$98	\$98	\$95	\$99

RAW DATA

GENETIC TYPE SUMMARY (GTS)

Act Birth Wght	Wght 12/07/17	Scrotal Size Cms 12/07/17	EMA Scan 29/11/16	IMF Scan 29/11/16	P8 Fat Mms 29/11/16	DESCRIPTIVE TRAITS					STRUCTURAL TRAITS				Sheath	GTS Grade
						Stature	Capacity	Body Length	Muscle	Doing Ability	Front Feet	Back Feet	Hind Leg Angle	Pastern Angle		
45	580	39	NA	NA	NA	25	38	29	38	31	22	23	26	23	5	5

Buyer Price \$

The HBR embryo's continue. Another ideal heifer bull.

Angus Breed Average	Gest	Birth	Milk	200	400	600	MatC	SS	Carc	Rib	Rump	EMA	RBV	IMF	ABI	DI	Grain I	Grass I
	-3.6	4.3	15	42	77	101	87	1.7	57	0.0	-0.2	4.6	0.3	1.6	\$108	\$104	\$111	\$106



WEERAN MANHATTAN M119

Genetic Status AMFU, NHFU, CAFU, DDFU

Freeze Brand M119

Reg. Status H

Birth Date 09-04-16

AYRVALE BARTEL E7

WEERAN JIMMY J1

WEERAN VHW C194

TE MANIA AFRICA

WEERAN ELIZABETH H5

WEERAN ELIZABETH E407

EBV

Calving Ease DIR	Calving Ease DTRS	Gest. lgth (days)	Birth wt. (kg)	Milk (kg)	200 wt. (kg)	400 wt. (kg)	600 wt. (kg)	Mat. Cow wt.	Scrotal size	Carcase wt. (kg)	Rib Fat (mm)	Rump Fat (mm)	EMA (sq. cm)	Ret. Beef yield %	IMF %	ANGUS BREEDING INDEX	DOMESTIC INDEX	HEAVY GRAIN INDEX	HEAVY GRASS INDEX
1.2	3.5	-5.3	2.7	21	40	76	93	74	1.4	54	-1.3	-0.7	6.9	0.8	2.5	\$119	\$115	\$129	\$113

RAW DATA

GENETIC TYPE SUMMARY (GTS)

Act Birth Wght	Wght 12/07/17	Scrotal Size Cms 12/07/17	EMA Scan 29/11/16	IMF Scan 29/11/16	P8 Fat Mms 29/11/16	DESCRIPTIVE TRAITS					STRUCTURAL TRAITS				Sheath	GTS Grade
						Stature	Capacity	Body Length	Muscle	Doing Ability	Front Feet	Back Feet	Hind Leg Angle	Pastern Angle		
38	522	39	NA	NA	NA	25	37	29	38	31	23	24	26	23	4	5

Buyer Price \$

This dam, Weeran VHHW5 produced the top selling bull in the autumn sale this year. A very low birthweight Jimmy son. HBR and ideal for heifer joinings.



WEERAN MELDRUM M126

Genetic Status AMFU, NHFU, CA25%, DDFU

Freeze Brand M126

Reg. Status A

Birth Date 17-04-16

AYRVALE BARTEL E7

WEERAN JOEL J13

WEERAN VHW E602

DUNOON EVERYTHING E499

WEERAN J12

WEERAN D319

EBV

Calving Ease DIR	Calving Ease DTRS	Gest. lgth (days)	Birth wt. (kg)	Milk (kg)	200 wt. (kg)	400 wt. (kg)	600 wt. (kg)	Mat. Cow wt.	Scrotal size	Carcase wt. (kg)	Rib Fat (mm)	Rump Fat (mm)	EMA (sq. cm)	Ret. Beef yield %	IMF %	ANGUS BREEDING INDEX	DOMESTIC INDEX	HEAVY GRAIN INDEX	HEAVY GRASS INDEX
2.7	3.7	-4.7	3.5	18	43	78	99	71	2	61	0	0.3	4.4	0	2	\$118	\$113	\$122	\$115

RAW DATA

GENETIC TYPE SUMMARY (GTS)

Act Birth Wght	Wght 12/07/17	Scrotal Size Cms 12/07/17	EMA Scan 29/11/16	IMF Scan 29/11/16	P8 Fat Mms 29/11/16	DESCRIPTIVE TRAITS					STRUCTURAL TRAITS				Sheath	GTS Grade
						Stature	Capacity	Body Length	Muscle	Doing Ability	Front Feet	Back Feet	Hind Leg Angle	Pastern Angle		
40	534	43	NA	NA	NA	24	38	28	39	32	22	23	26	23	5	5

Buyer Price \$

A low birthweight Joel son with positive fat and good index figures. Suitable over heifers.

Angus Breed Average	Gest	Birth	Milk	200	400	600	MatC	SS	Carc	Rib	Rump	EMA	RBY	IMF	ABI	DI	Grain I	Grass I
	-3.6	4.3	15	42	77	101	87	1.7	57	0.0	-0.2	4.6	0.3	1.6	\$108	\$104	\$111	\$106



WEERAN METRO M133

Genetic Status AMFU, NHFU, CAFU, DDFU

Freeze Brand M133

Reg. Status H

Birth Date 10-05-16

AYRVALE BARTEL E7
WEERAN JIMMY J1
WEERAN VHW C194
LAWSONS DINKY-DI Z191
WEERAN G21
WEERAN D120

Calving Ease DIR	Calving Ease DTRS	Gest. lgth (days)	Birth wt. (kg)	Milk (kg)	200 wt. (kg)	400 wt. (kg)	600 wt. (kg)	Mat. Cow wt.	Scrotal size	Carcase wt. (kg)	Rib Fat (mm)	Rump Fat (mm)	EMA (sq. cm)	Ret. Beef yield %	IMF %	ANGUS BREEDING INDEX	DOMESTIC INDEX	HEAVY GRAIN INDEX	HEAVY GRASS INDEX
1.4	2.5	-5	4.6	19	51	89	120	101	1.5	72	-1.4	-1.1	3.8	0.5	2.4	\$129	\$116	\$142	\$123

RAW DATA

GENETIC TYPE SUMMARY (GTS)

Act Birth Wght	Wght 12/07/17	Scrotal Size Cms 12/07/17	EMA Scan 29/11/16	IMF Scan 29/11/16	P8 Fat Mms 29/11/16	DESCRIPTIVE TRAITS					STRUCTURAL TRAITS				Sheath	GTS Grade
						Stature	Capacity	Body Length	Muscle	Doing Ability	Front Feet	Back Feet	Hind Leg Angle	Pastern Angle		
42	606	39	NA	NA	NA	26	38	30	38	31	21	24	26	24	5	4

Buyer Price \$

A natural calf out of donor cow G21 who has been a true performer. An ideal growth curve, very good milk and strong carcass figures. Also excellent indexing.



WEERAN MINCER M42

AI

Genetic Status AMFU, NHFU, CAFU, DDFU

Freeze Brand M042

Reg. Status H

Birth Date 13-03-16

SYDGEN TRUST 6228
SYDGEN BLACK PEARL 2006
SYDGEN ANITA 8611
KAPP DESIGNER
WEERAN B4
WEERAN X76

Calving Ease DIR	Calving Ease DTRS	Gest. lgth (days)	Birth wt. (kg)	Milk (kg)	200 wt. (kg)	400 wt. (kg)	600 wt. (kg)	Mat. Cow wt.	Scrotal size	Carcase wt. (kg)	Rib Fat (mm)	Rump Fat (mm)	EMA (sq. cm)	Ret. Beef yield %	IMF %	ANGUS BREEDING INDEX	DOMESTIC INDEX	HEAVY GRAIN INDEX	HEAVY GRASS INDEX
4	3.4	-5.1	2	21	39	70	95	76	1.2	57	0.8	0	4.5	0.1	1.7	\$103	\$101	\$102	\$104

RAW DATA

GENETIC TYPE SUMMARY (GTS)

Act Birth Wght	Wght 12/07/17	Scrotal Size Cms 12/07/17	EMA Scan 29/11/16	IMF Scan 29/11/16	P8 Fat Mms 29/11/16	DESCRIPTIVE TRAITS					STRUCTURAL TRAITS				Sheath	GTS Grade
						Stature	Capacity	Body Length	Muscle	Doing Ability	Front Feet	Back Feet	Hind Leg Angle	Pastern Angle		
33	580	40	NA	NA	NA	25	36	28	35	33	21	23	26	23	4	4

Buyer Price \$

With an actual birthweight of 33kgs, he is ideal for heifer matings.

Angus Breed Average	Gest	Birth	Milk	200	400	600	MatC	SS	Carc	Rib	Rump	EMA	RBV	IMF	ABI	DI	Grain I	Grass I
	-3.6	4.3	15	42	77	101	87	1.7	57	0.0	-0.2	4.6	0.3	1.6	\$108	\$104	\$111	\$106



WEERAN MIAMI M134

Genetic Status AMFU, NHFU, CAFU, DDFU

Freeze Brand M134

Reg. Status A

Birth Date 12-05-16

AYRVALE BARTEL E7
WEERAN JOEL J13
WEERAN VHW E602
WEERAN ELVIS E33
WEERAN G420
WEERAN Y363

	Calving Ease DIR	Calving Ease DTRS	Gest. lgth (days)	Birth wt. (kg)	Milk (kg)	200 wt. (kg)	400 wt. (kg)	600 wt. (kg)	Mat. Cow wt.	Scrotal size	Carcase wt. (kg)	Rib Fat (mm)	Rump Fat (mm)	EMA (sq. cm)	Ret. Beef yield %	IMF %	ANGUS BREEDING INDEX	DOMESTIC INDEX	HEAVY GRAIN INDEX	HEAVY GRASS INDEX
EBV	-0.7	1.2	-4.2	6	17	45	79	105	90	2	61	-0.4	0.2	3.6	0.4	1.8	\$111	\$104	\$115	\$108

RAW DATA

GENETIC TYPE SUMMARY (GTS)

Act Birth Wght	Wght 12/07/17	Scrotal Size Cms 12/07/17	EMA Scan 29/11/16	IMF Scan 29/11/16	P8 Fat Mms 29/11/16	DESCRIPTIVE TRAITS					STRUCTURAL TRAITS				Sheath	GTS Grade
						Stature	Capacity	Body Length	Muscle	Doing Ability	Front Feet	Back Feet	Hind Leg Angle	Pastern Angle		
48	524	39	NA	NA	NA	22	38	27	37	33	22	23	26	23	5	5

Buyer Price \$

The last calf to be born in the Autumn of 2016 and has grown flatout ever since.



WEERAN MILLIONAIRE M130

Genetic Status AMFU, NHFU, CAFU, DDFU

Freeze Brand M130

Reg. Status A

Birth Date 02-05-16

TE MANIA AFRICA
WEERAN HOOPER H20
WEERAN VHW D412
LAWSON'S NADAL
WEERAN H47
WEERAN D226

	Calving Ease DIR	Calving Ease DTRS	Gest. lgth (days)	Birth wt. (kg)	Milk (kg)	200 wt. (kg)	400 wt. (kg)	600 wt. (kg)	Mat. Cow wt.	Scrotal size	Carcase wt. (kg)	Rib Fat (mm)	Rump Fat (mm)	EMA (sq. cm)	Ret. Beef yield %	IMF %	ANGUS BREEDING INDEX	DOMESTIC INDEX	HEAVY GRAIN INDEX	HEAVY GRASS INDEX
EBV	0.6	-0.6	-2.6	2.4	15	39	75	93	76	3.3	48	-0.4	0.2	8.4	1	2.1	\$112	\$110	\$116	\$109

RAW DATA

GENETIC TYPE SUMMARY (GTS)

Act Birth Wght	Wght 12/07/17	Scrotal Size Cms 12/07/17	EMA Scan 29/11/16	IMF Scan 29/11/16	P8 Fat Mms 29/11/16	DESCRIPTIVE TRAITS					STRUCTURAL TRAITS				Sheath	GTS Grade
						Stature	Capacity	Body Length	Muscle	Doing Ability	Front Feet	Back Feet	Hind Leg Angle	Pastern Angle		
35	556	45	NA	NA	NA	23	37	25	37	32	22	23	26	23	5	4

Buyer Price \$

A Hooper/Nadal combination, with exceptionally low birth teamed with top 5% EMA. Hooper guarantees good indexing results.

Angus Breed Average	Gest	Birth	Milk	200	400	600	MatC	SS	Carc	Rib	Rump	EMA	RBY	IMF	ABI	DI	Grain I	Grass I
	-3.6	4.3	15	42	77	101	87	1.7	57	0.0	-0.2	4.6	0.3	1.6	\$108	\$104	\$111	\$106

REFERENCE SIRES



SydGen

Sydgen Black Pearl

REFERENCE SIRES



Weeran Hooper H20

REFERENCE SIRES



John Higgins
Musgrave Big Sky

REFERENCE SIRES



Weeran Joel J13



41 WEERAN LINSEED L563

Genetic Status AMFU, NHFU, CAFU, DDFU

Freeze Brand L563

Reg. Status A

Birth Date 29-09-15

BARWIDGEE VKD07328
BARWIDGEE JAY W
BARWIDGEE VKD06380
WEERAN CHICKEN ON A CHAIN
WEERAN G77 EBV
WEERAN Z92

Calving Ease DIR	Calving Ease DTRS	Gest. Lgth (days)	Birth wt. (kg)	Milk (kg)	200 wt. (kg)	400 wt. (kg)	600 wt. (kg)	Mat. Cow wt.	Scrotal size	Carcase wt. (kg)	Rib Fat (mm)	Rump Fat (mm)	EMA (sq. cm)	Ret. Beef yield %	IMF %	ANGUS BREEDING INDEX	DOMESTIC INDEX	HEAVY GRAIN INDEX	HEAVY GRASS INDEX
2.6	3.2	-3.6	3.4	13	39	79	104	94	1.4	57	0.3	0.5	1.3	-0.6	1.7	\$110	\$104	\$114	\$108

RAW DATA

GENETIC TYPE SUMMARY (GTS)

Act Birth Wght	Wght 12/07/17	Scrotal Size Cms 12/07/17	EMA Scan 29/11/16	IMF Scan 29/11/16	P8 Fat Mms 29/11/16	DESCRIPTIVE TRAITS					STRUCTURAL TRAITS				Sheath	GTS Grade
						Stature	Capacity	Body Length	Muscle	Doing Ability	Front Feet	Back Feet	Hind Leg Angle	Pastern Angle		
41	730	41	81	3.3	4	28	38	32	39	33	23	24	26	23	5	7

Buyer Price \$

The highest grading bull in the sale, by trusty Barwidgee JayW. Very low birthweight. Suitable for heifers.



42 WEERAN LION L453

Genetic Status AMFU, NHFU, CAFU, DDFU

Freeze Brand L453

Reg. Status A

Birth Date 04-09-15

AYRVALE BARTEL E7
WEERAN JIMMY J1
WEERAN VHW C194
DUNOON EVERYTHING E499
WEERAN H460 EBV
WEERAN B357

Calving Ease DIR	Calving Ease DTRS	Gest. Lgth (days)	Birth wt. (kg)	Milk (kg)	200 wt. (kg)	400 wt. (kg)	600 wt. (kg)	Mat. Cow wt.	Scrotal size	Carcase wt. (kg)	Rib Fat (mm)	Rump Fat (mm)	EMA (sq. cm)	Ret. Beef yield %	IMF %	ANGUS BREEDING INDEX	DOMESTIC INDEX	HEAVY GRAIN INDEX	HEAVY GRASS INDEX
1.2	4.4	-3.7	3.1	17	46	84	105	87	2.2	67	0	0.6	3.6	-0.4	2.5	\$122	\$115	\$131	\$117

RAW DATA

GENETIC TYPE SUMMARY (GTS)

Act Birth Wght	Wght 12/07/17	Scrotal Size Cms 12/07/17	EMA Scan 29/11/16	IMF Scan 29/11/16	P8 Fat Mms 29/11/16	DESCRIPTIVE TRAITS					STRUCTURAL TRAITS				Sheath	GTS Grade
						Stature	Capacity	Body Length	Muscle	Doing Ability	Front Feet	Back Feet	Hind Leg Angle	Pastern Angle		
36	742	45	78	4.5	5	28	39	32	40	31	23	25	26	24	4	6

Buyer Price \$

A lot to like about this son of Jimmy high grading with low birthweight and good growth and carcass figures. Ideal for heifers.

Angus Breed Average	Gest	Birth	Milk	200	400	600	MatC	SS	Carc	Rib	Rump	EMA	RBV	IMF	ABI	DI	Grain I	Grass I
	-3.6	4.3	15	42	77	101	87	1.7	57	0.0	-0.2	4.6	0.3	1.6	\$108	\$104	\$111	\$106



WEERAN LITHGOW L377

AI

Genetic Status AMFU, NHFU, CAFU, DDFU

Freeze Brand L377

Reg. Status A

Birth Date 25-08-15

TUWHARETOA REGENT D145
TEMANIA STUD TE MANIA 11 465
TE MANIA 03 116
TC FRANKLIN 619
WEERAN G300
WEERAN B312

Calving Ease DIR	Calving Ease DTRS	Gest. lgth (days)	Birth wt. (kg)	Milk (kg)	200 wt. (kg)	400 wt. (kg)	600 wt. (kg)	Mat. Cow wt.	Scrotal size	Carcase wt. (kg)	Rib Fat (mm)	Rump Fat (mm)	EMA (sq. cm)	Ret. Beef yield %	IMF %	ANGUS BREEDING INDEX	DOMESTIC INDEX	HEAVY GRAIN INDEX	HEAVY GRASS INDEX
-3.8	-1.7	-1.6	5.1	15	50	88	115	103	2	66	0.6	1	3.1	-1.6	3.7	\$114	\$100	\$132	\$105

RAW DATA

GENETIC TYPE SUMMARY (GTS)

Act Birth Wght	Wght 12/07/17	Scrotal Size Cms 12/07/17	EMA Scan 29/11/16	IMF Scan 29/11/16	P8 Fat Mms 29/11/16	DESCRIPTIVE TRAITS					STRUCTURAL TRAITS				Sheath	GTS Grade
						Stature	Capacity	Body Length	Muscle	Doing Ability	Front Feet	Back Feet	Hind Leg Angle	Pastern Angle		
45	812	42	82	5.3	5	25	38	29	38	34	22	23	26	23	5	6

Buyer Price \$

A 6 grading son of NZ bull TeMania 11 465. Good growth and carcass numbers with IMF in the top 1% for the breed.



WEERAN LITHIUM L189

Genetic Status AMFU, NHFU, CAFU, DDFU

Freeze Brand L189

Reg. Status A

Birth Date 17-08-15

AYRVALE BARTEL E7
WEERAN JOEL J13
WEERAN VHW E602
TE MANIA AFRICA
WEERAN H259
WEERAN D506

Calving Ease DIR	Calving Ease DTRS	Gest. lgth (days)	Birth wt. (kg)	Milk (kg)	200 wt. (kg)	400 wt. (kg)	600 wt. (kg)	Mat. Cow wt.	Scrotal size	Carcase wt. (kg)	Rib Fat (mm)	Rump Fat (mm)	EMA (sq. cm)	Ret. Beef yield %	IMF %	ANGUS BREEDING INDEX	DOMESTIC INDEX	HEAVY GRAIN INDEX	HEAVY GRASS INDEX
4.2	4.3	-6.6	2.3	21	41	76	97	72	2.7	53	0	0.2	7.7	0.8	2.4	\$127	\$119	\$136	\$122

RAW DATA

GENETIC TYPE SUMMARY (GTS)

Act Birth Wght	Wght 12/07/17	Scrotal Size Cms 12/07/17	EMA Scan 29/11/16	IMF Scan 29/11/16	P8 Fat Mms 29/11/16	DESCRIPTIVE TRAITS					STRUCTURAL TRAITS				Sheath	GTS Grade
						Stature	Capacity	Body Length	Muscle	Doing Ability	Front Feet	Back Feet	Hind Leg Angle	Pastern Angle		
36	712	45	90	4.1	4	24	37	27	38	32	23	24	26	23	4	6

Buyer Price \$

One of the best Joel sons to be presented out of one of our donor cows, with outstanding growth curve, milk and carcass data. Graded 6 and ideal for heifers.

Angus Breed Average	Gest	Birth	Milk	200	400	600	MatC	SS	Carc	Rib	Rump	EMA	RBY	IMF	ABI	DI	Grain I	Grass I
	-3.6	4.3	15	42	77	101	87	1.7	57	0.0	-0.2	4.6	0.3	1.6	\$108	\$104	\$111	\$106



45 WEERAN LIZARD L449

Genetic Status AMFU, NHFU, CAFU, DDFU

Freeze Brand L449

Reg. Status A

Birth Date 04-09-15

BARWIDGEE VKD07328
BARWIDGEE JAY W
BARWIDGEE VKD06380
SILVEIRAS M811 TOTAL 6103
WEERAN G209
WEERAN D448

Calving Ease DIR	Calving Ease DTRS	Gest. lgth (days)	Birth wt. (kg)	Milk (kg)	200 wt. (kg)	400 wt. (kg)	600 wt. (kg)	Mat. Cow wt.	Scrotal size	Carcass wt. (kg)	Rib Fat (mm)	Rump Fat (mm)	EMA (sq. cm)	Ret. Beef yield %	IMF %	ANGUS BREEDING INDEX	DOMESTIC INDEX	HEAVY GRAIN INDEX	HEAVY GRASS INDEX
-3.8	-1.2	-1.5	6.2	17	53	102	132	118	1.3	75	-2.2	-2	3.9	0.7	2	\$116	\$110	\$127	\$112

RAW DATA

GENETIC TYPE SUMMARY (GTS)

Act Birth Wght	Wght 12/07/17	Scrotal Size Cms 12/07/17	EMA Scan 29/11/16	IMF Scan 29/11/16	P8 Fat Mms 29/11/16	DESCRIPTIVE TRAITS					STRUCTURAL TRAITS				Sheath	GTS Grade
						Stature	Capacity	Body Length	Muscle	Doing Ability	Front Feet	Back Feet	Hind Leg Angle	Pastern Angle		
49	770	40	84	3.8	3	29	39	33	41	28	22	22	25	23	5	5

Buyer Price \$

A powerhouse bull by Jay-W. Top 1% 400 day weight, top 5% 200 and 600 day weight. A real meat machine.



46 WEERAN LOAF L141

AI

Genetic Status AMFU, NHFU, CAFU, DDFU

Freeze Brand L141

Reg. Status A

Birth Date 07-08-15

AYRVALE BARTEL E7
WEERAN JOEL J13
WEERAN VHW E602
SILVEIRAS M811 TOTAL 6103
WEERAN J141
WEERAN E426

Calving Ease DIR	Calving Ease DTRS	Gest. lgth (days)	Birth wt. (kg)	Milk (kg)	200 wt. (kg)	400 wt. (kg)	600 wt. (kg)	Mat. Cow wt.	Scrotal size	Carcass wt. (kg)	Rib Fat (mm)	Rump Fat (mm)	EMA (sq. cm)	Ret. Beef yield %	IMF %	ANGUS BREEDING INDEX	DOMESTIC INDEX	HEAVY GRAIN INDEX	HEAVY GRASS INDEX
0.4	1.5	-3.1	5.3	20	51	89	117	101	2.8	71	-2.3	-2	3.8	0.7	2.6	\$124	\$114	\$139	\$116

RAW DATA

GENETIC TYPE SUMMARY (GTS)

Act Birth Wght	Wght 12/07/17	Scrotal Size Cms 12/07/17	EMA Scan 29/11/16	IMF Scan 29/11/16	P8 Fat Mms 29/11/16	DESCRIPTIVE TRAITS					STRUCTURAL TRAITS				Sheath	GTS Grade
						Stature	Capacity	Body Length	Muscle	Doing Ability	Front Feet	Back Feet	Hind Leg Angle	Pastern Angle		
39	738	46	75	4.5	3	27	38	30	38	30	23	23	26	23	5	5

Buyer Price \$

A powerful Joel son with top 10% carcass weight, 200 day weight, scrotal and milk.

Angus Breed Average	Gest	Birth	Milk	200	400	600	MatC	SS	Carc	Rib	Rump	EMA	RBV	IMF	ABI	DI	Grain I	Grass I
	-3.6	4.3	15	42	77	101	87	1.7	57	0.0	-0.2	4.6	0.3	1.6	\$108	\$104	\$111	\$106



WEERAN LEXUS L401

AI

Genetic Status AMFU, NHFU, CAFU, DDFU

Freeze Brand L401

Reg. Status H

Birth Date 26-08-15

CONNEALY EARNAN 076E
MUSGRAVE BIG SKY
SAV PRIMROSE 8244
B/R AMBUSH
WEERAN E369
WEERAN X33

Calving Ease DIR	Calving Ease DTRS	Gest. lgth (days)	Birth wt. (kg)	Milk (kg)	200 wt. (kg)	400 wt. (kg)	600 wt. (kg)	Mat. Cow wt.	Scrotal size	Carcase wt. (kg)	Rib Fat (mm)	Rump Fat (mm)	EMA (sq. cm)	Ret. Beef yield %	IMF %	ANGUS BREEDING INDEX	DOMESTIC INDEX	HEAVY GRAIN INDEX	HEAVY GRASS INDEX
-1.3	1.2	-2.8	4.1	14	45	82	105	89	0.9	58	-0.4	-1.2	7.9	1.1	1.5	\$108	\$107	\$109	\$108

RAW DATA

GENETIC TYPE SUMMARY (GTS)

Act Birth Wght	Wght 12/07/17	Scrotal Size Cms 12/07/17	EMA Scan 29/11/16	IMF Scan 29/11/16	P8 Fat Mms 29/11/16	DESCRIPTIVE TRAITS					STRUCTURAL TRAITS				Sheath	GTS Grade
						Stature	Capacity	Body Length	Muscle	Doing Ability	Front Feet	Back Feet	Hind Leg Angle	Pastern Angle		
42	722	42	90	3.9	5	26	37	30	37	33	22	23	25	24	5	5

Buyer Price \$

The Big Sky sons have been in high demand and topping sales in the North. This HBR son has been used by Weeran to back up a.i. programs, and out from the cows on 25/7/17.



WEERAN LOGGERHEAD L487

Genetic Status DDF, AMFU, NHFU, CAFU

Freeze Brand L487

Reg. Status A

Birth Date 11-09-15

TC FRANKLIN 619
WEERAN GREEN MOON
WEERAN VHW C524
WEERAN CHICKEN ON A CHAIN
WEERAN F482
WEERAN B138

Calving Ease DIR	Calving Ease DTRS	Gest. lgth (days)	Birth wt. (kg)	Milk (kg)	200 wt. (kg)	400 wt. (kg)	600 wt. (kg)	Mat. Cow wt.	Scrotal size	Carcase wt. (kg)	Rib Fat (mm)	Rump Fat (mm)	EMA (sq. cm)	Ret. Beef yield %	IMF %	ANGUS BREEDING INDEX	DOMESTIC INDEX	HEAVY GRAIN INDEX	HEAVY GRASS INDEX
-4.5	-0.5	-4.7	6.7	8	51	86	112	105	3.8	64	-1.6	-1	3.3	1.2	1.2	\$103	\$102	\$105	\$102

RAW DATA

GENETIC TYPE SUMMARY (GTS)

Act Birth Wght	Wght 12/07/17	Scrotal Size Cms 12/07/17	EMA Scan 29/11/16	IMF Scan 29/11/16	P8 Fat Mms 29/11/16	DESCRIPTIVE TRAITS					STRUCTURAL TRAITS				Sheath	GTS Grade
						Stature	Capacity	Body Length	Muscle	Doing Ability	Front Feet	Back Feet	Hind Leg Angle	Pastern Angle		
47	720	46	82	3.2	2	25	37	29	38	30	22	23	26	24	5	5

Buyer Price \$

A good sound Green Moon son with longevity in his background, with his mother being a 7 year old cow with 7 natural calves.

Angus Breed Average	Gest	Birth	Milk	200	400	600	MatC	SS	Carc	Rib	Rump	EMA	RBY	IMF	ABI	DI	Grain I	Grass I
	-3.6	4.3	15	42	77	101	87	1.7	57	0.0	-0.2	4.6	0.3	1.6	\$108	\$104	\$111	\$106



WEERAN LAGER L144

AI**Genetic Status** AMFU, NHFU, CAFU, DDFU**Freeze Brand** L144**Reg. Status** A**Birth Date** 09-08-15

GAR PREDESTINED
WERNER WESTWARD 357
 BFF EVERELDA ENTENSE 401
 BOOROOMOOKA FRANKEL F510
WEERAN J254
 WEERAN C305

Calving Ease DIR	Calving Ease DTRS	Gest. Lgth (days)	Birth wt. (kg)	Milk (kg)	200 wt. (kg)	400 wt. (kg)	600 wt. (kg)	Mat. Cow wt.	Scrotal size	Carcase wt. (kg)	Rib Fat (mm)	Rump Fat (mm)	EMA (sq. cm)	Ret. Beef yield %	IMF %	ANGUS BREEDING INDEX	DOMESTIC INDEX	HEAVY GRAIN INDEX	HEAVY GRASS INDEX
-1.5	-0.3	-0.7	5.3	20	47	88	118	100	2.1	63	0.8	0.8	5.1	0.2	2.4	\$124	\$110	\$136	\$118

RAW DATA**GENETIC TYPE SUMMARY (GTS)**

Act Birth Wght	Wght 12/07/17	Scrotal Size Cms 12/07/17	EMA Scan 29/11/16	IMF Scan 29/11/16	P8 Fat Mms 29/11/16	DESCRIPTIVE TRAITS					STRUCTURAL TRAITS				Sheath	GTS Grade
						Stature	Capacity	Body Length	Muscle	Doing Ability	Front Feet	Back Feet	Hind Leg Angle	Pastern Angle		
40	744	41	86	4.5	6	23	39	26	40	31	23	23	26	23	5	5

Buyer Price \$

A powerful Werner Westward son with good maternal traits with milk in the top 10%. Grandfather Booroomooka Frankel was sold for \$65,000.



WEERAN LONG RANGE L523

Genetic Status NHF, AMFU, CAFU, DDFU**Freeze Brand** L523**Reg. Status** A**Birth Date** 16-09-15

TE MANIA AFRICA
WEERAN HOOPER H20
 WEERAN VHW D412
 B/R GENESIS
WEERAN E161
 WEERAN B189

Calving Ease DIR	Calving Ease DTRS	Gest. Lgth (days)	Birth wt. (kg)	Milk (kg)	200 wt. (kg)	400 wt. (kg)	600 wt. (kg)	Mat. Cow wt.	Scrotal size	Carcase wt. (kg)	Rib Fat (mm)	Rump Fat (mm)	EMA (sq. cm)	Ret. Beef yield %	IMF %	ANGUS BREEDING INDEX	DOMESTIC INDEX	HEAVY GRAIN INDEX	HEAVY GRASS INDEX
4.9	2.9	-5	1.9	23	39	79	108	88	2.7	55	-0.4	-0.1	6.6	0.6	2.2	\$121	\$111	\$129	\$118

RAW DATA**GENETIC TYPE SUMMARY (GTS)**

Act Birth Wght	Wght 12/07/17	Scrotal Size Cms 12/07/17	EMA Scan 29/11/16	IMF Scan 29/11/16	P8 Fat Mms 29/11/16	DESCRIPTIVE TRAITS					STRUCTURAL TRAITS				Sheath	GTS Grade
						Stature	Capacity	Body Length	Muscle	Doing Ability	Front Feet	Back Feet	Hind Leg Angle	Pastern Angle		
36	692	43	81	1	2	23	37	28	38	33	22	23	27	23	5	5

Buyer Price \$

Hooper keeps producing nice looking bulls with great paperwork. Super low birth at 1.9 being top 5%, with a top end growth of 108. Excellent milk with very good carcass. A very well balanced unit.

Angus Breed Average	Gest	Birth	Milk	200	400	600	MatC	SS	Carc	Rib	Rump	EMA	RBV	IMF	ABI	DI	Grain I	Grass I
	-3.6	4.3	15	42	77	101	87	1.7	57	0.0	-0.2	4.6	0.3	1.6	\$108	\$104	\$111	\$106



WEERAN LAGOON L350

AI

Genetic Status AMFU, NHFU, CAFU, DDFU

Freeze Brand L350

Reg. Status A

Birth Date 24-08-15

SYDGEN TRUST 6228
SYDGEN BLACK PEARL 2006
SYDGEN ANITA 8611
TC FRANKLIN 619
WEERAN H342
WEERAN A456

Calving Ease DIR	Calving Ease DTRS	Gest. Lgth (days)	Birth wt. (kg)	Milk (kg)	200 wt. (kg)	400 wt. (kg)	600 wt. (kg)	Mat. Cow wt.	Scrotal size	Carcase wt. (kg)	Rib Fat (mm)	Rump Fat (mm)	EMA (sq. cm)	Ret. Beef yield %	IMF %	ANGUS BREEDING INDEX	DOMESTIC INDEX	HEAVY GRAIN INDEX	HEAVY GRASS INDEX
2.5	4.1	-4.4	2.9	13	43	74	101	84	1.4	54	0.1	-0.3	4.6	0.1	2	\$112	\$106	\$115	\$110

RAW DATA

GENETIC TYPE SUMMARY (GTS)

Act Birth Wght	Wght 12/07/17	Scrotal Size Cms 12/07/17	EMA Scan 29/11/16	IMF Scan 29/11/16	P8 Fat Mms 29/11/16	DESCRIPTIVE TRAITS					STRUCTURAL TRAITS				Sheath	GTS Grade
						Stature	Capacity	Body Length	Muscle	Doing Ability	Front Feet	Back Feet	Hind Leg Angle	Pastern Angle		
41	658	40	78	3.8	3	24	37	28	38	32	22	23	27	22	4	5

Buyer Price \$

Excellent low birthweight son of Sydgen Black Pearl with top 1% calving ease daughters. TC Franklin in the dam's pedigree reinforces the calving ease of this bull.



WEERAN LONERGAN L476

Genetic Status AMFU, NHFU, CAFU, DDFU

Freeze Brand L476

Reg. Status A

Birth Date 10-09-15

AYRVALE BARTEL E7
WEERAN JIMMY J1
WEERAN VHW C194
B/R FUTURE DIRECTION4268
WEERAN H289
WEERAN E225

Calving Ease DIR	Calving Ease DTRS	Gest. Lgth (days)	Birth wt. (kg)	Milk (kg)	200 wt. (kg)	400 wt. (kg)	600 wt. (kg)	Mat. Cow wt.	Scrotal size	Carcase wt. (kg)	Rib Fat (mm)	Rump Fat (mm)	EMA (sq. cm)	Ret. Beef yield %	IMF %	ANGUS BREEDING INDEX	DOMESTIC INDEX	HEAVY GRAIN INDEX	HEAVY GRASS INDEX
-1.5	2.3	-5.2	4.5	17	44	77	98	89	0.5	64	-1.6	-1.2	3.1	0.5	2.1	\$101	\$101	\$107	\$98

RAW DATA

GENETIC TYPE SUMMARY (GTS)

Act Birth Wght	Wght 12/07/17	Scrotal Size Cms 12/07/17	EMA Scan 29/11/16	IMF Scan 29/11/16	P8 Fat Mms 29/11/16	DESCRIPTIVE TRAITS					STRUCTURAL TRAITS				Sheath	GTS Grade
						Stature	Capacity	Body Length	Muscle	Doing Ability	Front Feet	Back Feet	Hind Leg Angle	Pastern Angle		
44	722	39	69	2	2	23	38	27	38	32	22	23	26	23	5	5

Buyer Price \$

The two Ayrvale Bartel sons we have bred being Jimmy & Joel are doing a nice job breeding complete performance packages in all areas.

Angus Breed Average	Gest	Birth	Milk	200	400	600	MatC	SS	Carc	Rib	Rump	EMA	RBY	IMF	ABI	DI	Grain I	Grass I
	-3.6	4.3	15	42	77	101	87	1.7	57	0.0	-0.2	4.6	0.3	1.6	\$108	\$104	\$111	\$106



WEERAN LOOSE CHANGE L325 AI

Genetic Status AMFU, NHFU, CAFU, DDFU

Freeze Brand L325

Reg. Status A

Birth Date 23-08-15

AYRVALE BARTEL E7
WEERAN JIMMY J1
WEERAN VHW C194
WEERAN ELVIS E33
WEERAN J54
WEERAN D335

	Calving Ease DIR	Calving Ease DTRS	Gest. lgth (days)	Birth wt. (kg)	Milk (kg)	200 wt. (kg)	400 wt. (kg)	600 wt. (kg)	Mat. Cow wt.	Scrotal size	Carcass wt. (kg)	Rib Fat (mm)	Rump Fat (mm)	EMA (sq. cm)	Ret. Beef yield %	IMF %	ANGUS BREEDING INDEX	DOMESTIC INDEX	HEAVY GRAIN INDEX	HEAVY GRASS INDEX
EBV	0.9	3.2	-4.8	3.7	21	43	78	99	86	0.8	63	-1.2	-0.6	3.4	0.5	1.7	\$106	\$106	\$108	\$104

RAW DATA

GENETIC TYPE SUMMARY (GTS)

Act Birth Wght	Wght 12/07/17	Scrotal Size Cms 12/07/17	EMA Scan 29/11/16	IMF Scan 29/11/16	P8 Fat Mms 29/11/16	DESCRIPTIVE TRAITS					STRUCTURAL TRAITS				Sheath	GTS Grade
						Stature	Capacity	Body Length	Muscle	Doing Ability	Front Feet	Back Feet	Hind Leg Angle	Pastern Angle		
34	670	38	71	2	3	23	38	27	38	31	22	23	26	24	5	5

Buyer Price \$

A 34kg calf at birth out of a heifer. An excellent calving ease bull. Ideal for heifer matings.



WEERAN LORD HOWE L176

Genetic Status AMFU, NHFU, CAFU, DDFU

Freeze Brand L176

Reg. Status A

Birth Date 16-08-15

AYRVALE BARTEL E7
WEERAN JOEL J13
WEERAN VHW E602
BARWIDGEE JAY W
WEERAN H378
WEERAN A232

	Calving Ease DIR	Calving Ease DTRS	Gest. lgth (days)	Birth wt. (kg)	Milk (kg)	200 wt. (kg)	400 wt. (kg)	600 wt. (kg)	Mat. Cow wt.	Scrotal size	Carcass wt. (kg)	Rib Fat (mm)	Rump Fat (mm)	EMA (sq. cm)	Ret. Beef yield %	IMF %	ANGUS BREEDING INDEX	DOMESTIC INDEX	HEAVY GRAIN INDEX	HEAVY GRASS INDEX
EBV	1.9	3	-4	4.5	17	45	83	107	84	1	64	-1.8	-1.6	4	1.2	1.2	\$114	\$113	\$115	\$113

RAW DATA

GENETIC TYPE SUMMARY (GTS)

Act Birth Wght	Wght 12/07/17	Scrotal Size Cms 12/07/17	EMA Scan 29/11/16	IMF Scan 29/11/16	P8 Fat Mms 29/11/16	DESCRIPTIVE TRAITS					STRUCTURAL TRAITS				Sheath	GTS Grade
						Stature	Capacity	Body Length	Muscle	Doing Ability	Front Feet	Back Feet	Hind Leg Angle	Pastern Angle		
41	722	40	78	1.5	2	30	38	33	37	28	22	23	27	23	4	4

Buyer Price \$

A very strong and well proven pedigree on both sides. Low birth, calving ease and good growth curve.

Angus Breed Average	Gest	Birth	Milk	200	400	600	MatC	SS	Carc	Rib	Rump	EMA	RBV	IMF	ABI	DI	Grain I	Grass I
	-3.6	4.3	15	42	77	101	87	1.7	57	0.0	-0.2	4.6	0.3	1.6	\$108	\$104	\$111	\$106



WEERAN LORRY L248

AI

Genetic Status AMFU, NHFU, CAFU, DDFU

Freeze Brand L248

Reg. Status A

Birth Date 20-08-15

CONNELY EARNAN 076E
MUSGRAVE BIG SKY
SAV PRIMROSE 8244
AYRVALE BARTEL E7
WEERAN H374
WEERAN A228

EBV

Calving Ease DIR	Calving Ease DTRS	Gest. lgth (days)	Birth wt. (kg)	Milk (kg)	200 wt. (kg)	400 wt. (kg)	600 wt. (kg)	Mat. Cow wt.	Scrotal size	Carcase wt. (kg)	Rib Fat (mm)	Rump Fat (mm)	EMA (sq. cm)	Ret. Beef yield %	IMF %	ANGUS BREEDING INDEX	DOMESTIC INDEX	HEAVY GRAIN INDEX	HEAVY GRASS INDEX
0.5	2.1	-5.4	3.8	19	49	85	112	84	1.1	68	0.2	-0.7	6.6	0.8	1.4	\$115	\$111	\$114	\$116

RAW DATA

GENETIC TYPE SUMMARY (GTS)

Act Birth Wght	Wght 12/07/17	Scrotal Size Cms 12/07/17	EMA Scan 29/11/16	IMF Scan 29/11/16	P8 Fat Mms 29/11/16	DESCRIPTIVE TRAITS					STRUCTURAL TRAITS				Sheath	GTS Grade
						Stature	Capacity	Body Length	Muscle	Doing Ability	Front Feet	Back Feet	Hind Leg Angle	Pastern Angle		
42	706	43	84	1.9	3	26	38	30	38	28	22	23	26	23	5	4

Buyer Price \$

A nice Big Sky son with excellent growth curve, high milk and ideal for heifer matings.



WEERAN LOVER BOY L225

AI

Genetic Status AMFU, NHFU, CAFU, DDFU

Freeze Brand L225

Reg. Status A

Birth Date 18-08-15

RITO 9M25
WATTLETOP JASPER J3
WATTLETOP ROBE G338
WEERAN CHICKEN ON A CHAIN
WEERAN F427
WEERAN A11

EBV

Calving Ease DIR	Calving Ease DTRS	Gest. lgth (days)	Birth wt. (kg)	Milk (kg)	200 wt. (kg)	400 wt. (kg)	600 wt. (kg)	Mat. Cow wt.	Scrotal size	Carcase wt. (kg)	Rib Fat (mm)	Rump Fat (mm)	EMA (sq. cm)	Ret. Beef yield %	IMF %	ANGUS BREEDING INDEX	DOMESTIC INDEX	HEAVY GRAIN INDEX	HEAVY GRASS INDEX
2.1	3.5	-8	3.2	14	39	74	96	76	0.9	58	-0.7	-1.2	4.2	0.8	1.6	\$110	\$108	\$112	\$108

RAW DATA

GENETIC TYPE SUMMARY (GTS)

Act Birth Wght	Wght 12/07/17	Scrotal Size Cms 12/07/17	EMA Scan 29/11/16	IMF Scan 29/11/16	P8 Fat Mms 29/11/16	DESCRIPTIVE TRAITS					STRUCTURAL TRAITS				Sheath	GTS Grade
						Stature	Capacity	Body Length	Muscle	Doing Ability	Front Feet	Back Feet	Hind Leg Angle	Pastern Angle		
29	684	36	79	3.6	3	26	38	30	37	28	22	23	26	23	4	4

Buyer Price \$

At 29kgs at birth, he has performed well. Low birthweight and calving ease, and very suitable for heifer joinings.

Angus Breed Average	Gest	Birth	Milk	200	400	600	MatC	SS	Carc	Rib	Rump	EMA	RBY	IMF	ABI	DI	Grain I	Grass I
	-3.6	4.3	15	42	77	101	87	1.7	57	0.0	-0.2	4.6	0.3	1.6	\$108	\$104	\$111	\$106



WEERAN LOYAL L535

Genetic Status AMFU, NHFU, CAFU, DDFU

Freeze Brand L535

Reg. Status H

Birth Date 18-09-15

AYRVALE BARTEL E7
WEERAN JIMMY J1
WEERAN VHW C194
TC FRANKLIN 619
WEERAN H384
WEERAN C355

EBV	Calving Ease DIR	Calving Ease DTRS	Gest. Lgth (days)	Birth wt. (kg)	Milk (kg)	200 wt. (kg)	400 wt. (kg)	600 wt. (kg)	Mat. Cow wt.	Scrotal size	Carcase wt. (kg)	Rib Fat (mm)	Rump Fat (mm)	EMA (sq. cm)	Ret. Beef yield %	IMF %	ANGUS BREEDING INDEX	DOMESTIC INDEX	HEAVY GRAIN INDEX	HEAVY GRASS INDEX
	0.3	3.8	-5.4	3.2	14	46	81	100	93	0	63	-1.8	-1.1	3.8	0	2.6	\$110	\$109	\$120	\$105

RAW DATA

GENETIC TYPE SUMMARY (GTS)

Act Birth Wght	Wght 12/07/17	Scrotal Size Cms 12/07/17	EMA Scan 29/11/16	IMF Scan 29/11/16	P8 Fat Mms 29/11/16	DESCRIPTIVE TRAITS					STRUCTURAL TRAITS				Sheath	GTS Grade
						Stature	Capacity	Body Length	Muscle	Doing Ability	Front Feet	Back Feet	Hind Leg Angle	Pastern Angle		
42	702	37	71	2.7	3	25	36	29	37	32	22	23	27	23	4	4

Buyer Price \$

Calving ease on both sides of the pedigree with Franklin and Bartel. Well proven and ideal for heifer matings.



WEERAN LUKE L493

Genetic Status AMFU, NHFU, CAFU, DDFU

Freeze Brand L493

Reg. Status A

Birth Date 12-09-15

DUNOON EVERYTHING E499
WEERAN JACK J28
WEERAN VHW G21
ARDROSSAN EQUATOR D19
WEERAN F207
WEERAN V441

EBV	Calving Ease DIR	Calving Ease DTRS	Gest. Lgth (days)	Birth wt. (kg)	Milk (kg)	200 wt. (kg)	400 wt. (kg)	600 wt. (kg)	Mat. Cow wt.	Scrotal size	Carcase wt. (kg)	Rib Fat (mm)	Rump Fat (mm)	EMA (sq. cm)	Ret. Beef yield %	IMF %	ANGUS BREEDING INDEX	DOMESTIC INDEX	HEAVY GRAIN INDEX	HEAVY GRASS INDEX
	-5.3	-2.8	-1.7	8.4	10	51	88	122	120	1.4	66	-0.1	0.9	-0.6	-0.5	1.3	\$98	\$89	\$100	\$97

RAW DATA

GENETIC TYPE SUMMARY (GTS)

Act Birth Wght	Wght 12/07/17	Scrotal Size Cms 12/07/17	EMA Scan 29/11/16	IMF Scan 29/11/16	P8 Fat Mms 29/11/16	DESCRIPTIVE TRAITS					STRUCTURAL TRAITS				Sheath	GTS Grade
						Stature	Capacity	Body Length	Muscle	Doing Ability	Front Feet	Back Feet	Hind Leg Angle	Pastern Angle		
50	684	39	64	1.6	3	26	38	29	37	31	22	22	26	23	5	4

Buyer Price \$

A power growth bull by Jack who will add kilo's to the scales.

Angus Breed Average	Gest	Birth	Milk	200	400	600	MatC	SS	Carc	Rib	Rump	EMA	RBV	IMF	ABI	DI	Grain I	Grass I
	-3.6	4.3	15	42	77	101	87	1.7	57	0.0	-0.2	4.6	0.3	1.6	\$108	\$104	\$111	\$106



WEERAN LANYARD L258

AI**Genetic Status** AMFU, NHFU, CAFU, DDFU**Freeze Brand** L258**Reg. Status** A**Birth Date** 19-08-15

TUWHARETOA REGENT D145
TEMANIA STUD TE MANIA 11 465
 TE MANIA 03 116
 ARDROSSAN EQUATOR D19
WEERAN G272
 WEERAN C184

EBV

Calving Ease DIR	Calving Ease DTRS	Gest. lgth (days)	Birth wt. (kg)	Milk (kg)	200 wt. (kg)	400 wt. (kg)	600 wt. (kg)	Mat. Cow wt.	Scrotal size	Carcase wt. (kg)	Rib Fat (mm)	Rump Fat (mm)	EMA (sq. cm)	Ret. Beef yield %	IMF %	ANGUS BREEDING INDEX	DOMESTIC INDEX	HEAVY GRAIN INDEX	HEAVY GRASS INDEX
0	-1.1	-5.1	4.2	14	43	76	103	102	2.1	63	1.3	1.1	5.1	-0.9	3	\$117	\$102	\$132	\$109

RAW DATA**GENETIC TYPE SUMMARY (GTS)**

Act Birth Wght	Wght 12/07/17	Scrotal Size Cms 12/07/17	EMA Scan 29/11/16	IMF Scan 29/11/16	P8 Fat Mms 29/11/16	DESCRIPTIVE TRAITS					STRUCTURAL TRAITS				Sheath	GTS Grade
						Stature	Capacity	Body Length	Muscle	Doing Ability	Front Feet	Back Feet	Hind Leg Angle	Pastern Angle		
29	654	43	73	4.8	5	25	36	29	37	31	21	23	27	23	5	4

Buyer Price \$

A twin at birth. A low birthweight 11 465 son with positive fat and excellent IMF in the top 10%.

WEERAN LAZRUS L196

AI**Genetic Status** DDF, AMFU, NHFU, CAFU**Freeze Brand** L196**Reg. Status** A**Birth Date** 18-08-15

TUWHARETOA REGENT D145
TEMANIA STUD TE MANIA 11 465
 TE MANIA 03 116
 SITZ NEW DESIGN 458N
WEERAN G330
 WEERAN C440

EBV

Calving Ease DIR	Calving Ease DTRS	Gest. lgth (days)	Birth wt. (kg)	Milk (kg)	200 wt. (kg)	400 wt. (kg)	600 wt. (kg)	Mat. Cow wt.	Scrotal size	Carcase wt. (kg)	Rib Fat (mm)	Rump Fat (mm)	EMA (sq. cm)	Ret. Beef yield %	IMF %	ANGUS BREEDING INDEX	DOMESTIC INDEX	HEAVY GRAIN INDEX	HEAVY GRASS INDEX
-0.8	-1.9	-4	4	18	45	82	107	90	2.1	64	1.1	0.7	4.2	-0.9	3.2	\$114	\$104	\$128	\$107

RAW DATA**GENETIC TYPE SUMMARY (GTS)**

Act Birth Wght	Wght 12/07/17	Scrotal Size Cms 12/07/17	EMA Scan 29/11/16	IMF Scan 29/11/16	P8 Fat Mms 29/11/16	DESCRIPTIVE TRAITS					STRUCTURAL TRAITS				Sheath	GTS Grade
						Stature	Capacity	Body Length	Muscle	Doing Ability	Front Feet	Back Feet	Hind Leg Angle	Pastern Angle		
26	622	42	79	4.7	6	23	36	27	37	31	22	23	26	23	5	4

Buyer Price \$

A twin at birth, who has grown out well. Top 5% IMF and good paperwork all round.

Angus Breed Average	Gest	Birth	Milk	200	400	600	MatC	SS	Carc	Rib	Rump	EMA	RBY	IMF	ABI	DI	Grain I	Grass I
	-3.6	4.3	15	42	77	101	87	1.7	57	0.0	-0.2	4.6	0.3	1.6	\$108	\$104	\$111	\$106



WEERAN LEGITIMATE L470

Genetic Status AMFU, NHFU, CAFU, DDFU

Freeze Brand L470

Reg. Status A

Birth Date 08-09-15

AYRVALE BARTEL E7
WEERAN JIMMY J1
WEERAN VHW C194
BARWIDGEE JAY W
WEERAN H205
WEERAN B505

EBV

Calving Ease DIR	Calving Ease DTRS	Gest. lgth (days)	Birth wt. (kg)	Milk (kg)	200 wt. (kg)	400 wt. (kg)	600 wt. (kg)	Mat. Cow wt.	Scrotal size	Carcase wt. (kg)	Rib Fat (mm)	Rump Fat (mm)	EMA (sq. cm)	Ref. Beef yield %	IMF %	ANGUS BREEDING INDEX	DOMESTIC INDEX	HEAVY GRAIN INDEX	HEAVY GRASS INDEX
1.8	3.8	-4	3.4	19	41	85	109	96	1.1	65	-1.2	-0.5	3.6	0.3	1.8	\$118	\$112	\$125	\$115

RAW DATA

GENETIC TYPE SUMMARY (GTS)

Act Birth Wght	Wght 12/07/17	Scrotal Size Cms 12/07/17	EMA Scan 29/11/16	IMF Scan 29/11/16	P8 Fat Mms 29/11/16	DESCRIPTIVE TRAITS					STRUCTURAL TRAITS				Sheath	GTS Grade
						Stature	Capacity	Body Length	Muscle	Doing Ability	Front Feet	Back Feet	Hind Leg Angle	Pastern Angle		
40	698	40	82	2.2	4	24	37	27	38	31	22	23	26	23	5	4

Buyer Price \$

A Jimmy/Jay W combination with low birth. Ideal for heifer joinings.



WEERAN LEONGATHA L406

AI

Genetic Status AMFU, NHFU, CAFU, DDFU

Freeze Brand L406

Reg. Status A

Birth Date 28-08-15

TUWHARETOA REGENT D145
TEMANIA STUD TE MANIA 11 465
TE MANIA Q3 116
LAWSONS DINKY-DI Z191
WEERAN E426
WEERAN Z251

EBV

Calving Ease DIR	Calving Ease DTRS	Gest. lgth (days)	Birth wt. (kg)	Milk (kg)	200 wt. (kg)	400 wt. (kg)	600 wt. (kg)	Mat. Cow wt.	Scrotal size	Carcase wt. (kg)	Rib Fat (mm)	Rump Fat (mm)	EMA (sq. cm)	Ref. Beef yield %	IMF %	ANGUS BREEDING INDEX	DOMESTIC INDEX	HEAVY GRAIN INDEX	HEAVY GRASS INDEX
1.9	-1.7	-1.5	3.1	18	43	75	102	88	1.3	61	1.4	0.6	4.7	-1.2	3	\$111	\$99	\$121	\$105

RAW DATA

GENETIC TYPE SUMMARY (GTS)

Act Birth Wght	Wght 12/07/17	Scrotal Size Cms 12/07/17	EMA Scan 29/11/16	IMF Scan 29/11/16	P8 Fat Mms 29/11/16	DESCRIPTIVE TRAITS					STRUCTURAL TRAITS				Sheath	GTS Grade
						Stature	Capacity	Body Length	Muscle	Doing Ability	Front Feet	Back Feet	Hind Leg Angle	Pastern Angle		
38	768	42	83	3.2	4	24	37	27	40	32	22	23	26	23	5	4

Buyer Price \$

A nice set of paperwork in this low birthweight son of 11 465.

Angus Breed Average	Gest	Birth	Milk	200	400	600	MatC	SS	Carc	Rib	Rump	EMA	RBV	IMF	ABI	DI	Grain I	Grass I
	-3.6	4.3	15	42	77	101	87	1.7	57	0.0	-0.2	4.6	0.3	1.6	\$108	\$104	\$111	\$106



WEERAN LIMEBURNERS L351

AI**Genetic Status** AMFU, NHFU, CAFU, DDFU**Freeze Brand** L351**Reg. Status** A**Birth Date** 24-08-15

SYDGEN TRUST 6228
SYDGEN BLACK PEARL 2006
 SYDGEN ANITA 8611
 DUNOON EVERYTHING E499
WEERAN H295
 WEERAN E313

EBV

Calving Ease DIR	Calving Ease DTRS	Gest. lgth (days)	Birth wt. (kg)	Milk (kg)	200 wt. (kg)	400 wt. (kg)	600 wt. (kg)	Mat. Cow wt.	Scrotal size	Carcase wt. (kg)	Rib Fat (mm)	Rump Fat (mm)	EMA (sq. cm)	Ret. Beef yield %	IMF %	ANGUS BREEDING INDEX	DOMESTIC INDEX	HEAVY GRAIN INDEX	HEAVY GRASS INDEX
1.9	3.5	-3.7	3.9	16	44	80	107	81	1.4	62	1.2	0.8	5.4	-0.3	1.8	\$116	\$108	\$117	\$116

RAW DATA**GENETIC TYPE SUMMARY (GTS)**

Act Birth Wght	Wght 12/07/17	Scrotal Size Cms 12/07/17	EMA Scan 29/11/16	IMF Scan 29/11/16	P8 Fat Mms 29/11/16	DESCRIPTIVE TRAITS					STRUCTURAL TRAITS				Sheath	GTS Grade
						Stature	Capacity	Body Length	Muscle	Doing Ability	Front Feet	Back Feet	Hind Leg Angle	Pastern Angle		
38	706	41	84	4.1	5	23	36	26	37	29	21	23	27	23	4	4

Buyer Price \$

A low birthweight Black Pearl son with good carcass and good indexing. Ideal for heifer matings.

WEERAN LONDON TOWN L359

AI**Genetic Status** AMFU, NHFU, CAFU, DDFU**Freeze Brand** L359**Reg. Status** A**Birth Date** 24-08-15

SYDGEN TRUST 6228
SYDGEN BLACK PEARL 2006
 SYDGEN ANITA 8611
 WEERAN BOOMERANG B59
WEERAN E256
 WEERAN X216

EBV

Calving Ease DIR	Calving Ease DTRS	Gest. lgth (days)	Birth wt. (kg)	Milk (kg)	200 wt. (kg)	400 wt. (kg)	600 wt. (kg)	Mat. Cow wt.	Scrotal size	Carcase wt. (kg)	Rib Fat (mm)	Rump Fat (mm)	EMA (sq. cm)	Ret. Beef yield %	IMF %	ANGUS BREEDING INDEX	DOMESTIC INDEX	HEAVY GRAIN INDEX	HEAVY GRASS INDEX
2.4	3.6	-2.7	4.4	17	44	77	108	89	0.7	60	-1	-1.8	5.3	0.9	1.6	\$108	\$105	\$110	\$109

RAW DATA**GENETIC TYPE SUMMARY (GTS)**

Act Birth Wght	Wght 12/07/17	Scrotal Size Cms 12/07/17	EMA Scan 29/11/16	IMF Scan 29/11/16	P8 Fat Mms 29/11/16	DESCRIPTIVE TRAITS					STRUCTURAL TRAITS				Sheath	GTS Grade
						Stature	Capacity	Body Length	Muscle	Doing Ability	Front Feet	Back Feet	Hind Leg Angle	Pastern Angle		
41	686	39	80	3.3	2	24	37	27	36	30	23	23	27	23	5	4

Buyer Price \$

A Sydgen Black Pearl son out of a Weeran Boomerang daughter. Longevity and doability will be this bull's strength, as well as ideal for heifer matings.

Angus Breed Average	Gest	Birth	Milk	200	400	600	MatC	SS	Carc	Rib	Rump	EMA	RBY	IMF	ABI	DI	Grain I	Grass I
	-3.6	4.3	15	42	77	101	87	1.7	57	0.0	-0.2	4.6	0.3	1.6	\$108	\$104	\$111	\$106



WEERAN LUXEMBOURG L407 AI

Genetic Status AMFU, NHFU, CAFU, DDFU

Freeze Brand L407

Reg. Status A

Birth Date 27-08-15

TUWHARETOA REGENT D145
TEMANIA STUD TE MANIA 11 465
TE MANIA 03 116
NICHOLS NICHOLS EXTRA K205
WEERAN E99 EBV
WEERAN C591

Calving Ease DIR	Calving Ease DTRS	Gest. Lgth (days)	Birth wt. (kg)	Milk (kg)	200 wt. (kg)	400 wt. (kg)	600 wt. (kg)	Mat. Cow wt.	Scrotal size	Carcase wt. (kg)	Rib Fat (mm)	Rump Fat (mm)	EMA (sq. cm)	Ret. Beef yield %	IMF %	ANGUS BREEDING INDEX	DOMESTIC INDEX	HEAVY GRAIN INDEX	HEAVY GRASS INDEX
-2.2	-2.1	-2.9	4	16	46	82	104	97	1.3	67	0.6	-0.4	4.9	-0.5	2.5	\$101	\$98	\$108	\$97

RAW DATA

GENETIC TYPE SUMMARY (GTS)

Act Birth Wght	Wght 12/07/17	Scrotal Size Cms 12/07/17	EMA Scan 29/11/16	IMF Scan 29/11/16	P8 Fat Mms 29/11/16	DESCRIPTIVE TRAITS					STRUCTURAL TRAITS				Sheath	GTS Grade
						Stature	Capacity	Body Length	Muscle	Doing Ability	Front Feet	Back Feet	Hind Leg Angle	Pastern Angle		
40	774	39	90	4.2	4	24	37	28	37	32	22	23	26	23	5	4

Buyer Price \$

An 11 465 son out of a well proven dam. Above breed average in most ebv's. A herd improving sire.



WEERAN LUNA MODULE L562

Genetic Status AMFU, NHFU, CAFU, DDFU

Freeze Brand L562

Reg. Status A

Birth Date 29-09-15

TC FRANKLIN 619
WEERAN GREEN MOON
WEERAN VHW C524
RENNYLEA HYLINE C510
WEERAN F424 EBV
WEERAN D335

Calving Ease DIR	Calving Ease DTRS	Gest. Lgth (days)	Birth wt. (kg)	Milk (kg)	200 wt. (kg)	400 wt. (kg)	600 wt. (kg)	Mat. Cow wt.	Scrotal size	Carcase wt. (kg)	Rib Fat (mm)	Rump Fat (mm)	EMA (sq. cm)	Ret. Beef yield %	IMF %	ANGUS BREEDING INDEX	DOMESTIC INDEX	HEAVY GRAIN INDEX	HEAVY GRASS INDEX
0.3	1.1	-3.6	4.6	14	46	78	102	73	1.9	57	-0.7	0	6.6	1	1.2	\$110	\$108	\$106	\$112

RAW DATA

GENETIC TYPE SUMMARY (GTS)

Act Birth Wght	Wght 12/07/17	Scrotal Size Cms 12/07/17	EMA Scan 29/11/16	IMF Scan 29/11/16	P8 Fat Mms 29/11/16	DESCRIPTIVE TRAITS					STRUCTURAL TRAITS				Sheath	GTS Grade
						Stature	Capacity	Body Length	Muscle	Doing Ability	Front Feet	Back Feet	Hind Leg Angle	Pastern Angle		
41	714	40	76	1.2	3	25	37	29	37	32	22	23	27	23	5	4

Buyer Price \$

A Green Moon son with balanced paperwork. A good industry bull.

Angus Breed Average	Gest	Birth	Milk	200	400	600	MatC	SS	Carc	Rib	Rump	EMA	RBV	IMF	ABI	DI	Grain I	Grass I
	-3.6	4.3	15	42	77	101	87	1.7	57	0.0	-0.2	4.6	0.3	1.6	\$108	\$104	\$111	\$106



WEERAN LUNCH BOX L274

AI

Genetic Status AMFU, NHFU, CAFU, DDFU

Freeze Brand L274

Reg. Status A

Birth Date 21-08-15

RITO 9M25
WATTLETOP JASPER J3
 WATTLETOP ROBE G338
 RENNYLEA HYLINE C510
WEERAN F311
 WEERAN B67

	Calving Ease DIR	Calving Ease DTRS	Gest. lgt (days)	Birth wt. (kg)	Milk (kg)	200 wt. (kg)	400 wt. (kg)	600 wt. (kg)	Mat. Cow wt.	Scrotal size	Carcase wt. (kg)	Rib Fat (mm)	Rump Fat (mm)	EMA (sq. cm)	Ret. Beef yield %	IMF %	ANGUS BREEDING INDEX	DOMESTIC INDEX	HEAVY GRAIN INDEX	HEAVY GRASS INDEX
EBV	1.5	0.4	-5.1	3.5	19	41	68	96	68	0.9	56	0.2	-0.3	7.1	0.8	1.6	\$105	\$100	\$102	\$106

RAW DATA

GENETIC TYPE SUMMARY (GTS)

Act Birth Wght	Wght 12/07/17	Scrotal Size Cms 12/07/17	EMA Scan 29/11/16	IMF Scan 29/11/16	P8 Fat Mms 29/11/16	DESCRIPTIVE TRAITS					STRUCTURAL TRAITS				Sheath	GTS Grade
						Stature	Capacity	Body Length	Muscle	Doing Ability	Front Feet	Back Feet	Hind Leg Angle	Pastern Angle		
40	690	40	80	4	4	23	38	27	38	28	23	23	26	23	4	4

Buyer Price \$

A smaller statured, but deep capacity, sound footed Jasper son. Excellent yield potential. Suitable for heifer matings.



Lot 18 VHWL300



Lot 14 VHWL508

Angus Breed Average	Gest	Birth	Milk	200	400	600	MatC	SS	Carc	Rib	Rump	EMA	RBV	IMF	ABI	DI	Grain I	Grass I
	-3.6	4.3	15	42	77	101	87	1.7	57	0.0	-0.2	4.6	0.3	1.6	\$108	\$104	\$111	\$106

2017 AUTUMN BULL SALE



WEERAN 2017 SPRING BULL SALE SUMMARY SHEET AS AT 12/07/17

LOT	TAG	ANIMAL NAME	BIRTH	B WGHT	WGHT	BIRTH	MILK	600D	EMA	IMF%	\$ INDEX
1	L552	WEERAN LANGFORD L552	17-09-15	43	730	4.7	16	116	5.9	2.7	\$130
2	L543	WEERAN LARK L543	22-09-15	37	758	2.7	19	121	5	1.5	\$140
3	L140	WEERAN LAS VEGAS L140	07-08-15	42	790	6.5	20	126	6	2.5	\$146
4	L361	WEERAN LAUNCH L361	24-08-15	49	844	6	16	123	5.8	1.6	\$111
5	L421	WEERAN LAVA L421	28-08-15	48	798	6.2	11	124	4.7	2	\$107
6	L295	WEERAN LEMONADE L295	22-08-15	45	750	4.7	13	112	4.4	1.6	\$106
7	L371	WEERAN LEOPARD L371	25-08-15	48	764	5.2	13	109	7.1	1.2	\$99
8	L329	WEERAN LICORICE L329	23-08-15	44	750	4.1	17	101	5.5	2.2	\$123
9	L338	WEERAN LIGHT HOUSE L338	23-08-15	45	786	5.1	19	109	5.1	2.5	\$133
10	L337	WEERAN LINDT L337	23-08-15	48	806	5.7	13	99	3.9	2.1	\$115
11	L373	WEERAN LIQUID GOLD L373	25-08-15	51	760	6.9	11	116	3.3	1.2	\$105
12	L402	WEERAN LOCH NESS L402	27-08-15	44	824	6.9	9	120	4.5	1	\$100
13	L397	WEERAN LUNCH L397	26-08-15	43	772	6.6	6	111	6.2	0.8	\$100
14	L508	WEERAN LANDLORD L508	14-09-15	50	854	6.1	16	122	6.2	2.5	\$138
15	L374	WEERAN LANOLINE L374	25-08-15	45	744	5.9	16	118	5.9	3.4	\$133
16	L237	WEERAN LASSO L237	19-08-15	45	742	4	18	102	4.2	1.9	\$121
17	L429	WEERAN LASER L429	30-08-15	52	762	6.9	17	116	7.2	2.1	\$122
18	L300	WEERAN LAVISH L300	22-08-15	42	754	3.6	17	116	7.7	1.2	\$117
19	L472	WEERAN LAWYER L472	08-09-15	43	740	4.7	12	106	-0.9	1.6	\$116
20	L309	WEERAN LEATHER L309	22-08-15	48	740	4.8	14	99	4.4	1.3	\$99
21	L443	WEERAN LEGION L443	03-09-15	49	776	5.7	12	104	7.3	1.7	\$118
22	L460	WEERAN LEADER L460	05-09-15	44	688	4.9	20	126	6.9	2.3	\$152
23	L307	WEERAN LEGUME L307	22-08-15	43	728	5.3	17	102	6.8	3.3	\$142

B WGHT WGHT BIRTH MILK 600D EMA IMF% \$ INDEX

WEERAN SALE BULL AVERAGE

42Kgs

704Kgs

4.56

16

107.34

5.08

1.99

\$118

WEERAN 2017 SPRING BULL SALE SUMMARY SHEET AS AT 12/07/17

LOT	TAG	ANIMAL NAME	BIRTH	B WGHT	WGHT	BIRTH	MILK	600D	EMA	IMF%	\$ INDEX
24	L270	WEERAN LEVERAGE L270	21-08-15	45	708	5.8	14	108	6.2	2	\$121
25	L394	WEERAN LIGHTENING RIDGE L394	26-08-15	48	784	5.9	10	100	5.9	2.7	\$100
26	L398	WEERAN LYNDON B JOHNSON L398	26-08-15	45	760	5.2	15	111	4.6	2.9	\$122
27	M121	WEERAN MORTIFY M121	10-04-16	41	574	3.7	17	92	5	1.7	\$100
28	M014	WEERAN MACADAMIA M14	23-02-16	36	662	2.8	18	94	6.4	1.4	\$100
29	M012	WEERAN MAGPIE M12	23-02-16	46	652	4.8	16	105	6.4	1.4	\$105
30	M016	WEERAN MARBLE M16	25-02-16	45	570	4	17	98	6.4	1.4	\$100
31	M109	WEERAN MARVEL M109	02-04-16	32	556	3.8	17	105	3.7	2.4	\$129
32	M129	WEERAN MAI TAI M129	01-05-16	43	470	4.6	17	101	6.7	2.5	\$128
33	M015	WEERAN MALIBU M15	24-02-16	41	634	3.6	17	95	6.4	1.4	\$100
34	M011	WEERAN MARMALADE M11	22-02-16	45	580	4.5	17	94	6.3	1.4	\$95
35	M119	WEERAN MANHATTAN M119	09-04-16	38	522	2.7	21	93	6.9	2.5	\$129
36	M126	WEERAN MELDRUM M126	17-04-16	40	534	3.5	18	99	4.4	2	\$122
37	M133	WEERAN METRO M133	10-05-16	42	606	4.6	19	120	3.8	2.4	\$142
38	M042	WEERAN MINCER M42	13-03-16	33	580	2	21	95	4.5	1.7	\$102
39	M134	WEERAN MIAMI M134	12-05-16	48	524	6	17	105	3.6	1.8	\$115
40	M130	WEERAN MILLIONAIRE M130	02-05-16	35	556	2.4	15	93	8.4	2.1	\$116
41	L563	WEERAN LINSEED L563	29-09-15	41	730	3.4	13	104	1.3	1.7	\$114
42	L453	WEERAN LION L453	04-09-15	36	742	3.1	17	105	3.6	2.5	\$131
43	L377	WEERAN LITHGOW L377	25-08-15	45	812	5.1	15	115	3.1	3.7	\$132
44	L189	WEERAN LITHIUM L189	17-08-15	36	712	2.3	21	97	7.7	2.4	\$136
45	L449	WEERAN LIZARD L449	04-09-15	49	770	6.2	17	132	3.9	2	\$127
46	L141	WEERAN LOAF L141	07-08-15	39	738	5.3	20	117	3.8	2.6	\$139

B WGHT WGHT BIRTH MILK 600D EMA IMF% \$ INDEX

WEERAN SALE BULL AVERAGE

42Kgs 704Kgs 4.56 16 107.34 5.08 1.99 \$118

WEERAN 2017 SPRING BULL SALE SUMMARY SHEET AS AT 12/07/17

LOT	TAG	ANIMAL NAME	BIRTH	B WGHT	WGHT	BIRTH	MILK	600D	EMA	IMF%	\$ INDEX
47	L401	WEERAN LEXUS L401	26-08-15	42	722	4.1	14	105	7.9	1.5	\$109
48	L487	WEERAN LOGGERHEAD L487	11-09-15	47	720	6.7	8	112	3.3	1.2	\$105
49	L144	WEERAN LAGER L144	09-08-15	40	744	5.3	20	118	5.1	2.4	\$136
50	L523	WEERAN LONG RANGE L523	16-09-15	36	692	1.9	23	108	6.6	2.2	\$129
51	L350	WEERAN LAGOON L350	24-08-15	41	658	2.9	13	101	4.6	2	\$115
52	L476	WEERAN LONERGAN L476	10-09-15	44	722	4.5	17	98	3.1	2.1	\$107
53	L325	WEERAN LOOSE CHANGE L325	23-08-15	34	670	3.7	21	99	3.4	1.7	\$108
54	L176	WEERAN LORD HOWE L176	16-08-15	41	722	4.5	17	107	4	1.2	\$115
55	L248	WEERAN LORRY L248	20-08-15	42	706	3.8	19	112	6.6	1.4	\$114
56	L225	WEERAN LOVER BOY L225	18-08-15	29	684	3.2	14	96	4.2	1.6	\$112
57	L535	WEERAN LOYAL L535	18-09-15	42	702	3.2	14	100	3.8	2.6	\$120
58	L493	WEERAN LUKE L493	12-09-15	50	684	8.4	10	122	-0.6	1.3	\$100
59	L258	WEERAN LANYARD L258	19-08-15	29	654	4.2	14	103	5.1	3	\$132
60	L196	WEERAN LAZRUS L196	18-08-15	26	622	4	18	107	4.2	3.2	\$128
61	L470	WEERAN LEGITIMATE L470	08-09-15	40	698	3.4	19	109	3.6	1.8	\$125
62	L406	WEERAN LEONGATHA L406	28-08-15	38	768	3.1	18	102	4.7	3	\$121
63	L351	WEERAN LIMEBURNERS L351	24-08-15	38	706	3.9	16	107	5.4	1.8	\$117
64	L359	WEERAN LONDON TOWN L359	24-08-15	41	686	4.4	17	108	5.3	1.6	\$110
65	L407	WEERAN LUXEMBOURG L407	27-08-15	40	774	4	16	104	4.9	2.5	\$108
66	L562	WEERAN LUNA MODULE L562	29-09-15	41	714	4.6	14	102	6.6	1.2	\$106
67	L274	WEERAN LUNCH BOX L274	21-08-15	40	690	3.5	19	96	7.1	1.6	\$102

B WGHT WGHT BIRTH MILK 600D EMA IMF% \$ INDEX

WEERAN SALE BULL AVERAGE

42Kgs 704Kgs 4.56 16 107.34 5.08 1.99 \$118

REFERENCE SIRES



SYDGEN BLACK PEARL 2006 USA6055

Society ID USA17236055

Reg. Status HBR

Birth Date 01-01-12

SCR PROMISE 4042
SYDGEN TRUST 6228
 SYDGEN FOREVER LADY 4413
 CONNEALY FORWARD

Calving Ease	Gest. lgth (days)	Birth wt. (kg)	Milk (kg)	200 wt. (kg)	400 wt. (kg)	600 wt. (kg)	Mat. Cow wt.	Scrotal size	Carcase wt. (kg)	Rib Fat (mm)	Rump Fat (mm)	EMA (sq. cm)	Ret. Beef yield %	IMF %	ANGUS BREEDING INDEX	DOMESTIC INDEX	HEAVY GRAIN INDEX	HEAVY GRASS INDEX
3.9	-7.3	3.2	21	51	88	124	89	1.3	73	0.4	-1.5	8.9	0.9	1.9	\$134	\$120	\$140	\$132

SYDGEN ANITA 8611
 THREE TREES ANITA 5133

Black Pearl is an outstanding calving ease sire with plenty of growth & muscle. His EMA is top 1% & his progeny are impressive on paper & in the paddock.



WEERAN JOEL J13 VHWJ13

Society ID VHWJ13

Reg. Status APR

Birth Date 13-03-13

TE MANIA BARTEL B219
AYRVALE BARTEL E7
 EAGLEHAWK JEDDA B32
 WEERAN BOOMERANG B59

Calving Ease	Gest. lgth (days)	Birth wt. (kg)	Milk (kg)	200 wt. (kg)	400 wt. (kg)	600 wt. (kg)	Mat. Cow wt.	Scrotal size	Carcase wt. (kg)	Rib Fat (mm)	Rump Fat (mm)	EMA (sq. cm)	Ret. Beef yield %	IMF %	ANGUS BREEDING INDEX	DOMESTIC INDEX	HEAVY GRAIN INDEX	HEAVY GRASS INDEX
4.1	-6.4	3.7	16	45	78	98	68	2.8	64	0.2	0.6	7.5	0.7	2.8	\$135	\$125	\$148	\$127

WEERAN E602
 WEERAN Z50

An E7 son who has been benchmarked in the Angus Society benchmarking trial. A standout calf from the start which we retained for stud use. The combination of calving ease, low birth, large scrotal & carcass quality has made him a very easy bull to use.

REFERENCE SIRES



WEERAN JIMMY J1 VHWJ1

Society ID VHWJ1

Reg. Status HBR

Birth Date 02-03-13

TE MANIA BARTEL B219

AYRVALE BARTEL E7

EAGLEHAWK JEDDA B32

B/R AMBUSH 28

EBV

Calving Ease	Gest. Lgth (days)	Birth wt. (kg)	Milk (kg)	200 wt. (kg)	400 wt. (kg)	600 wt. (kg)	Mat. Cow wt.	Scrotal size	Carcass wt. (kg)	Rib Fat (mm)	Rump Fat (mm)	EMA (sq. cm)	Ret. Beef yield %	IMF %	ANGUS BREEDING INDEX	DOMESTIC INDEX	HEAVY GRAIN INDEX	HEAVY GRASS INDEX
2.1	-7.1	2.8	19	48	86	106	92	0.6	76	-1.5	-1.3	6.8	0.5	2.8	\$130	\$122	\$144	\$122

WEERAN C194

WEERAN A94

A HBR E7 son who has been benchmarked in the Angus Society benchmarking trial. He was a twin at birth & the body type of his calves is thick & attractive. Top 1% for gestation length.



TE MANIA 11 465 NZEG465

Society ID NZE16932011465

Reg. Status HBR

Birth Date 27-08-11

TE MANIA AMBASSADOR A134

TUWHARETOE REGENT D145

LAWSONS HENRY VIII Y5

BUTCHS MAXIMUM 3130

EBV

Calving Ease	Gest. Lgth (days)	Birth wt. (kg)	Milk (kg)	200 wt. (kg)	400 wt. (kg)	600 wt. (kg)	Mat. Cow wt.	Scrotal size	Carcass wt. (kg)	Rib Fat (mm)	Rump Fat (mm)	EMA (sq. cm)	Ret. Beef yield %	IMF %	ANGUS BREEDING INDEX	DOMESTIC INDEX	HEAVY GRAIN INDEX	HEAVY GRASS INDEX
-1.8	-4.6	4.5	15	45	81	109	109	1.2	71	3.1	2.1	5.5	-2.6	4.9	\$120	\$97	\$148	\$106

TE MANIA 03 116

TE MANIA 9521

A New Zealand bred son of Tuwharetoa Regent with high rib & rump fat ebvs & top 1% IMF. He has given us a very big lift in IMF & body fat cover.

REFERENCE SIRES



MUSGRAVE BIG SKY USA4813

Society ID USA17614813

Reg. Status HBR

Birth Date 16-01-13

CONNEALY CONSENSUS
CONNEALY EARNAN 076E

BRAZILIA OF CONANGA 3991 839A
 SAF 598 BANDO 5175 EBV

Calving Ease	Gest. lgth (days)	Birth wt. (kg)	Milk (kg)	200 wt. (kg)	400 wt. (kg)	600 wt. (kg)	Mat. Cow wt.	Scrotal size	Carcase wt. (kg)	Rib Fat (mm)	Rump Fat (mm)	EMA (sq. cm)	Ret. Beef yield %	IMF %	ANGUS BREEDING INDEX	DOMESTIC INDEX	HEAVY GRAIN INDEX	HEAVY GRASS INDEX
-0.4	-4.9	3.5	17	53	93	121	92	1.4	69	0.2	-1	6.6	0.5	1.5	\$116	\$112	\$115	\$117

SAV PRIMROSE 7861

SAV PRIMROSE 8244

The first sire used out of the Musgrave program. He is a big powerful bull with a surprisingly low birth weight. He is very sound and brings a number of important qualities to the table. His calves impress for type.



WEERAN HOOPER H20 VHWH20

Society ID VHWH20

Reg. Status APR

Birth Date 15-03-12

TE MANIA ULONG U41
TE MANIA AFRICA A217

TE MANIA JEDDA Y32
 ARDROSSAN CONNECTION X15 EBV

Calving Ease	Gest. lgth (days)	Birth wt. (kg)	Milk (kg)	200 wt. (kg)	400 wt. (kg)	600 wt. (kg)	Mat. Cow wt.	Scrotal size	Carcase wt. (kg)	Rib Fat (mm)	Rump Fat (mm)	EMA (sq. cm)	Ret. Beef yield %	IMF %	ANGUS BREEDING INDEX	DOMESTIC INDEX	HEAVY GRAIN INDEX	HEAVY GRASS INDEX
3.7	-5.6	2.2	32	39	85	114	85	4.8	50	-0.5	1	9.6	0.5	3	\$138	\$121	\$154	\$130

WEERAN D412

WEERAN Y137

An outstanding Africa son who has excellent numbers across the board. His temperament is perfect & is breeding very well. Top 1% scrotal & top 2% EMA.

REFERENCE SIRES



TE MANIA EPISTLE E852 VTME852

Society ID VTME852

Reg. Status

HBR

Birth Date

02-09-09

B/R NEW DEMENSION 7127

TE MANIA BARTEL B219

TE MANIA JEDDA W85

TE MANIA YAKKA Y428

EBV

Calving Ease	Gest. lgth (days)	Birth wt. (kg)	Milk (kg)	200 wt. (kg)	400 wt. (kg)	600 wt. (kg)	Mat. Cow wt.	Scrotal size	Carcase wt. (kg)	Rib Fat (mm)	Rump Fat (mm)	EMA (sq. cm)	Ret. Beef yield %	IMF %	ANGUS BREEDING INDEX	DOMESTIC INDEX	HEAVY GRAIN INDEX	HEAVY GRASS INDEX
-1.9	-5.6	5.9	17	50	89	116	76	2.6	61	0	0	10.3	0.6	3.2	\$144	\$124	\$163	\$133

TE MANIA MITTAGONG B562

TE MANIA MITTAGONG Y361

Used to extend the influence of Te Mania Bartel for EMA and IMF. His mature cow weight being lower than his 400 day weight is very desirable.



WATTLETOP JASPER J3 NWPJ3

Society ID NWPJ3

Reg. Status

HBR

Birth Date

30-06-13

GAR PREDESTINED

RITO 9M25

RITA 5F56

GLENAVON C140

EBV

Calving Ease	Gest. lgth (days)	Birth wt. (kg)	Milk (kg)	200 wt. (kg)	400 wt. (kg)	600 wt. (kg)	Mat. Cow wt.	Scrotal size	Carcase wt. (kg)	Rib Fat (mm)	Rump Fat (mm)	EMA (sq. cm)	Ret. Beef yield %	IMF %	ANGUS BREEDING INDEX	DOMESTIC INDEX	HEAVY GRAIN INDEX	HEAVY GRASS INDEX
3.1	-7.9	3.4	17	45	75	102	82	0.9	64	-0.5	-1.4	8.5	1.2	1.9	\$117	\$110	\$121	\$115

WATTLETOP ROBE G338

WATTLETOP ROBE B159

Used for calving ease and short gestation, also an opportunity to inject Predestined genetics into the herd.

REFERENCE SIREs



BARWIDGEE JAY W VKD09616

Society ID VKD09616

Reg. Status APR

Birth Date 16-09-09

BARWIDGEE 05146

BARWIDGEE 07328

BARWIDGEE 04246

BARWIDGEE 04109

BARWIDGEE 06380

BARWIDGEE 04398

EBV

Calving Ease	Gest. lgth (days)	Birth wt. (kg)	Milk (kg)	200 wt. (kg)	400 wt. (kg)	600 wt. (kg)	Mat. Cow wt.	Scrotal size	Carcase wt. (kg)	Rib Fat (mm)	Rump Fat (mm)	EMA (sq. cm)	Ret. Beef yield %	IMF %	ANGUS BREEDING INDEX	DOMESTIC INDEX	HEAVY GRAIN INDEX	HEAVY GRASS INDEX
4.4	-3	3.3	17	44	99	126	95	1.6	68	-0.1	-0.8	1.7	-0.1	1.6	\$136	\$125	\$143	\$132

We love Jay W..... his longevity is outstanding with him still being used today. His growth curve and calving ease are industry leading with his progeny being in high demand year after year.



WERNER WESTWARD 357 USA357

Society ID USA15738589

Reg. Status HBR

Birth Date 02-01-07

B/R NEW DESIGN 036

GAR PREDESTINED USA13395344

GAR EXT 4206

C A FUTURE DIRECTION 5321

BFF EVERELDA ENTENSE 4015

THREE TREES EVERELDA C27F

EBV

Calving Ease	Gest. lgth (days)	Birth wt. (kg)	Milk (kg)	200 wt. (kg)	400 wt. (kg)	600 wt. (kg)	Mat. Cow wt.	Scrotal size	Carcase wt. (kg)	Rib Fat (mm)	Rump Fat (mm)	EMA (sq. cm)	Ret. Beef yield %	IMF %	ANGUS BREEDING INDEX	DOMESTIC INDEX	HEAVY GRAIN INDEX	HEAVY GRASS INDEX
2.2	-2.7	3.1	23	41	78	103	80	-0.1	57	1	0.4	6.5	0.1	2.7	\$123	\$113	\$133	\$118

Used in our Autumn ET program to add calving ease & reduce mature cow size in a number of our Top Donor cows. An all rounder who ticks a lot of boxes in the game.

REFERENCE SIRES



WEERAN HOPMAN H31 VHWH31

Society ID VHWH31

Reg. Status APR

Birth Date 19-03-12

GAR ULTIMATE
LAWSONS NADAL E398

LAWSONS CONVERGENCE B887_{EBV}
WEERAN BOOMERANG B59

Calving Ease	Gest. Lgth (days)	Birth wt. (kg)	Milk (kg)	200 wt. (kg)	400 wt. (kg)	600 wt. (kg)	Mat. Cow wt.	Scrotal size	Carcass wt. (kg)	Rib Fat (mm)	Rump Fat (mm)	EMA (sq. cm)	Ref. Beef yield %	IMF %	ANGUS BREEDING INDEX	DOMESTIC INDEX	HEAVY GRAIN INDEX	HEAVY GRASS INDEX
-11.1	-1.5	9.4	6	60	102	134	142	2	79	-1.2	-1.2	8.7	1.1	1.8	\$103	\$96	\$110	\$100

WEERAN E148

WEERAN W185

An extremely powerful sire who has produced sons with huge capacity & muscle. He is not for whole herd use but does have the X factor for body capacity & muscle.

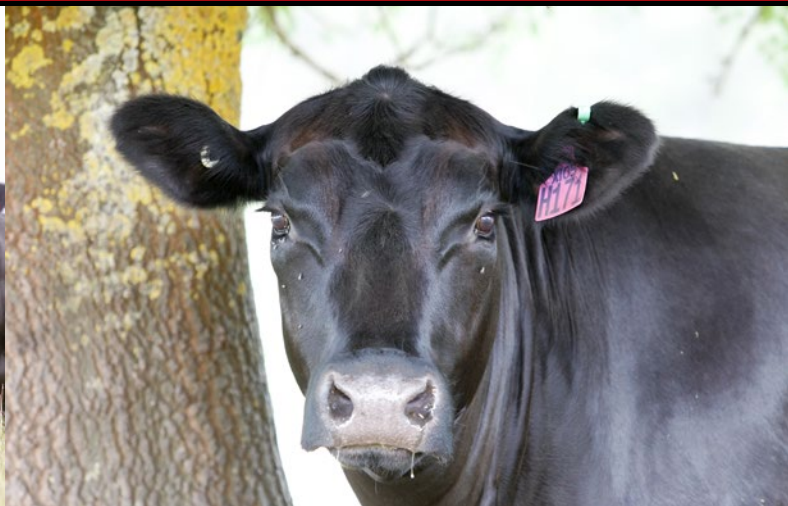


Lot 9 VHWL338



Lot 25 VHWL394

WEERAN FEMALES





Weeran Angus - Alec & Jo Moore p (03) 5578 7258 m 0438 787 258

5395 Hamilton Pt Fairy Rd, Byaduk VIC 3301

e weeran@bigpond.com Tim Wright m 0400 028 606

www.weeranangus.com.au